

10kV Double Busbar Segmentation Diagram



10kV Double Busbar Segmentation Diagram



Classification of Bus Bar - Free download as PDF File (.pdf), Text File (.txt) or read online for free.



Here, we provide an overview of common substation busbar configurations—Single Bus, Main and Transfer, Double Breaker/Double Bus, Ring Bus/Ring Main, and Breaker and a Half.



Download scientific diagram | Plan of 10 kV network with double busbar primary substations.



Download scientific diagram | Plan of 10 kV network with double busbar primary substations.



This document discusses different bus bar configurations used in substations and provides examples of each. It begins by explaining that bus bars interconnect ...



Busbar Configuration: Illustrates the typical arrangement and spacing for 3-phase (R, Y, B) conductors, essential for planning connections and ensuring phase segregation.



It also discusses the different busbar configurations adopted by the Andhra Pradesh Transmission Corporation (APTRANSCO) at various voltage levels. - Download as a PDF, PPTX or view online for ...



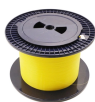
This document discusses different bus bar configurations used in substations and provides examples of each. It begins by explaining that bus bars interconnect incoming and outgoing feeders and their ...



This arrangement is found in MV and LV systems but also in 110/10 kV systems where a three-winding transformer can be installed to feed two MV systems as illustrated below:



As the name says, there are two bus bars, bus 1 and bus 2, as we can see in the diagram, each bay or equipment such as a line, or a transformer is connected to both the buses, through breaker and ...



Busbar - Coggle Diagram: Busbar (Protection (1) Interlocking schemes, 2) Overcurrent (“unrestrained” or “unbiased”) differential, 5) High-impedance bus differential schemes, 6) Low-impedance bus ...



Single-busbar switchgear 8DA10 and traction power supply switchgear 8DA11/12 is delivered in transport units comprising up to four panels. Double-busbar switchgear 8DB10 is delivered in ...

Contact Us

For more information, pricing, or custom data center solutions, please contact us:

Website: <https://yoahorroenergia.es>

Email: hello@yoahorroenergia.es

Phone: +233 54 318 7269

Address: Plot 28, Spintex Road, Accra, Greater Accra, Ghana

This document is for informational purposes only. Specifications subject to change without notice.

