

10kV busbar PT and incoming line PT



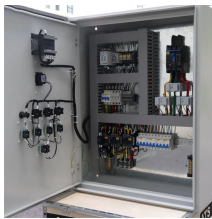
10kV busbar PT and incoming line PT



Generally, a primary substation includes a high-voltage busbar system, medium-voltage busbar system, auxiliary system, and one or several main transformers. In order to provide ...



When considering Double-ended MV M-T-M switchgear is it standard practice to have PT's located on line side of main breaker, load side of main breaker (bus PT's), or both?



Design and production of a busbar distribution installation for industrial and commercial buildings must meet 3 main requirements: progressive upgradeability of the installation, simplicity and dependability. ...



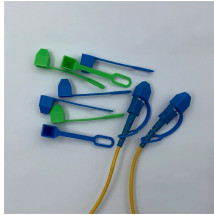
This switch cabinet is one of the 10kV outgoing cabinets. Composition: three sets of three-COIL CURRENT transformer, isolation switch, circuit breaker, knife gate, ...



This switch cabinet is one of the 10kV outgoing cabinets. Composition: three sets of three-COIL CURRENT transformer, isolation switch, circuit breaker, knife gate, live display device



Incoming cabinets, outgoing cabinets, metering cabinets, PT cabinets, tie cabinets, and isolation cabinets are common electrical devices widely used in substations, distribution rooms, and...



Selecting the right Potential Transformer (PT), also known as a Voltage Transformer, is critical for the safe operation of 10kV/35kV Medium Voltage Switchgear. These components step ...



Find top manufacturers & competitive prices for 10KV/11KV/12KV/15KV incoming line switchgear. Explore high-voltage solutions for smart grids, compliant with IEEE/GB standards.



A comprehensive guide to selecting components for 10kV substations, including circuit breakers, fuses, surge arresters, CTs, PTs, sectional breakers, busbars, and XLPE cables. Learn ...



Required accessories include the circuit breaker racking crank for inserting and removing the circuit breaker, a lift truck to insert/remove breakers in top cells, and a PT/CPT tool to connect/disconnect ...



Good Answer: If you close the breaker without a PT in position, to anyone looking at local or remote meters or to some of the protection, it will appear the busbar is dead.



Generally, a primary substation includes a high-voltage busbar ...

Contact Us

For more information, pricing, or custom data center solutions, please contact us:

Website: <https://yoahorroenergia.es>

Email: hello@yoahorroenergia.es

Phone: +233 54 318 7269

Address: Plot 28, Spintex Road, Accra, Greater Accra, Ghana

This document is for informational purposes only. Specifications subject to change without notice.

