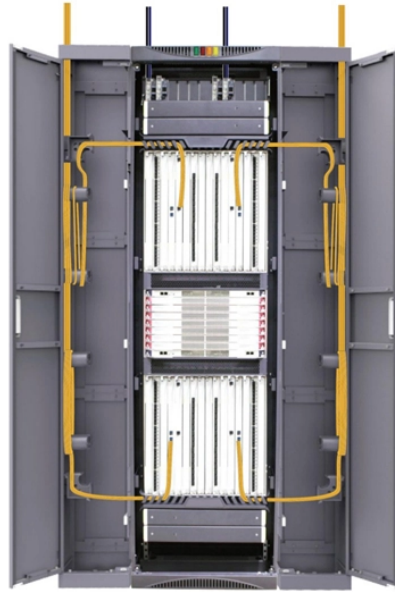


# **15-meter fiber optic patch cord pigtail lc-fc**



## 15-meter fiber optic patch cord pigtail lc-fc



Get low-loss fiber patch cables & cords with various connector options that support fiber optic cabling up to 400G. 100% tested. Customized cables available.



The L-com FCA-FCLC-DPS1Z-15 is a Duplex single mode fiber optic patch cable, with FC to LC connectors. The L-com FCA-FCLC-DPS1Z-15 is constructed with 9/125 OS1 single mode fiber, and ...



Specially designed for fast Ethernet, Fiber Channel, Gigabit Ethernet Speeds, data center, premises, educational, LAN, SAN, commercial, 10GBASE-L, 10GBASE-E, 1000BASE-LX and Asynchronous ...



Premium Fiber Optic Patch Cords are designed to interconnect or cross-connect networks within data centers, Broadband CATV, Passive Optical Networks (PON), WDM or DWDM multiplexing, FTTH, ...



Corning patch cords and pigtails can be ordered in five easy steps. The steps involve the selection of connector(s), fiber count, fiber type, cable type, and length.



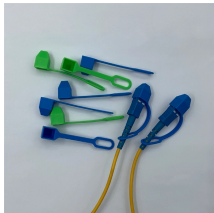
Shop Our Inventory Of Fiber Patch Cables Online. Graybar Is Your Trusted Distributor For Patch Cables.



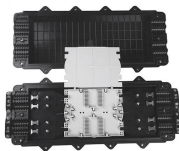
CommScope engineers and manufactures a complete line of high quality fiber pigtails



Fiber Optic Interconnects, Patch Cords & Pigtails  
Not finding what you're looking for?



All patch cords are 100% factory tested to ensure performance to ANSI/TIA 568-D.3, ISO 11801:2002 and EN 50173-1 standards. With complete connector range of SC, ST, LC, FC, and also the different ...



GR-326-CORE Generic Requirements for Single Mode Optical Connectors and Jumper Assemblies

## Contact Us

For more information, pricing, or custom data center solutions, please contact us:

Website: <https://yoahorroenergia.es>

Email: [hello@yoahorroenergia.es](mailto:hello@yoahorroenergia.es)

Phone: +233 54 318 7269

Address: Plot 28, Spintex Road, Accra, Greater Accra, Ghana

This document is for informational purposes only. Specifications subject to change without notice.

