

26-year-old mainline optical module



Overview

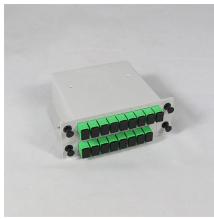
The early optical modules started at 155Mb/s (about 155 million bits transmitted in one second), and then gradually climbed: 622Mb/s, 1.5Gb/s, 10Gb/s, and now the mass-produced single channel laser optical module SFP28 has reached 25Gb/s, and QSFP28, the. Mainline Optical is a top UK supplier in the optical industry, offering high-quality solutions to enhance efficiency, precision, and productivity. We understand the challenges faced by optical professionals and have a diverse portfolio of products, including state-of-the-art glazing systems. Built for speed, precision, and smart diagnostics In a single measurement of only one second, cornea specialists obtain Scheimpflug images of the anterior segment and ultra high-resolution OCT images of the cornea. 5 in 1 system – OCT, Fundus Camera, Angiography, Biometry, Topography Realising your. Contact us to understand how D&B calculated your company's specific ESG Ranking, provide new or updated information to ensure your company's ESG Ranking remains accurate and up to date, or dispute your current ranking. The earliest package form was 1*9, and then GBIC, SFF, SFP, Xenpak, X2, XFP, etc. is a Driffield, East Yorkshire-based company specializing in equipment, machinery, and consumables for

optical lens surfacing and glazing labs.

26-year-old mainline optical module



Realise your vision with Mainline, specialists in optical equipment! Check out our range of optical instruments here.



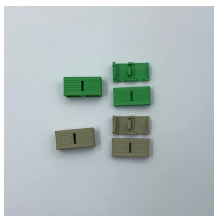
Find company research, competitor information, contact details & financial data for MAIN LINE OPTICAL CONNECTIONS LIMITED of DRIFFIELD. Get the latest business insights from Dun & Bradstreet.



Mainline Optical Connections Ltd. is a Driffield, East Yorkshire-based company specializing in equipment, machinery, and consumables for optical lens surfacing and glazing labs.



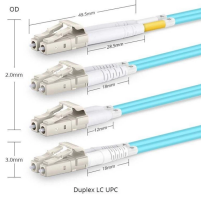
mainlineoptical



Mainline Optical Connections is proud to announce its 40th anniversary marking four decades of service and innovation in the Optical Industry As pa...



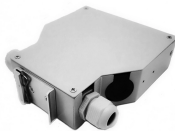
Mainline Optical Connections, founded in 1984, supplies high-quality optical solutions, including advanced glazing systems and consumables. Offering cutting-edge equipment from top brands such ...



We take pride in providing friendly and helpful advice to opticians and optical laboratories. Whether it's glazing equipment, surfacing consumables, nose pads, clip ons, trial frames we are sure to have what ...



With a full programme of workshops, live demonstrations, and CPD education running across the show, a little planning will help you get the most value from your time at 100% Optical.



The earliest package form was 1*9, and then GBIC, SFF, SFP, Xenpak, X2, XFP, etc. came one after another. Due to the limitations of the era, the 10G optical modules in the early 2000s were made ...



Mainline Optical is a top UK supplier in the optical industry, offering high-quality solutions to enhance efficiency, precision, and productivity.

Contact Us

For more information, pricing, or custom data center solutions, please contact us:

Website: <https://yoahorroenergia.es>

Email: hello@yoahorroenergia.es

Phone: +233 54 318 7269

Address: Plot 28, Spintex Road, Accra, Greater Accra, Ghana

This document is for informational purposes only. Specifications subject to change without notice.

