

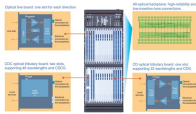
# **48-core Fiber Reinforcement Pad Installation Plan**



## 48-core Fiber Reinforcement Pad Installation Plan



Before beginning the installation, the installer must determine that the environment of the job site meets or exceeds all requirements specified in the installation guide. Prior to installing, remove the ...



Consult the Clearview Blue Cassette Installation Manual for splicing instructions, located under the Resources tab of the Clearfield website,



Enjoy the videos and music you love, upload original content, and share it all with friends, family, and the world on .



This article is a practical installation guide for GFRP reinforcement in U.S. slabs and foundations: cutting, tying, bar spacing, cover, splices, typical mistakes and several details where ...



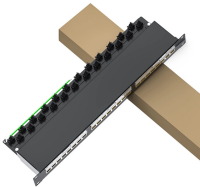
📺 \*In this video, I demonstrate a professional 48-core LC multimode fiber patch panel splicing in timelapse!\* Perfect for network engineers, data center techs, and telecom professionals....



While FRP is an excellent wall finish for car washes, the moisture conditions along with the swings in temperature and humidity call for careful planning and installation methods.



SikaFiber® SUPPORT, concrete performance and your reputation. Find out how our dedicated team of experts a SikaFiber® can improve your next project. Contact reinforcement required for a slab on ...



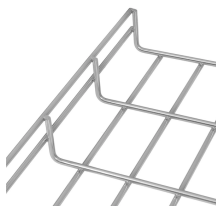
Belden provides the information and specifications herein on an "ASIS" basis, with no representations or warranties, whether express, statutory or implied.



Patch Panel, 48 Cores Application and Properties: Patch panel used in connecting end points network cables and network equipment such as hub and router.



While FRP is an excellent wall finish for car washes, the moisture conditions along with the swings in temperature and humidity call for careful planning and installation methods.



With this handbook the reader has a guide to the most relevant topics relative to Fibre Reinforced Concrete.



Several useful documents on fiber-reinforced concrete (FRC) have been developed by ACI Committee 544 on Fiber-Reinforced Concrete, including the ACI 544.4R design guide.

## Contact Us

For more information, pricing, or custom data center solutions, please contact us:

Website: <https://yoahorroenergia.es>

Email: [hello@yoahorroenergia.es](mailto:hello@yoahorroenergia.es)

Phone: +233 54 318 7269

Address: Plot 28, Spintex Road, Accra, Greater Accra, Ghana

This document is for informational purposes only. Specifications subject to change without notice.

