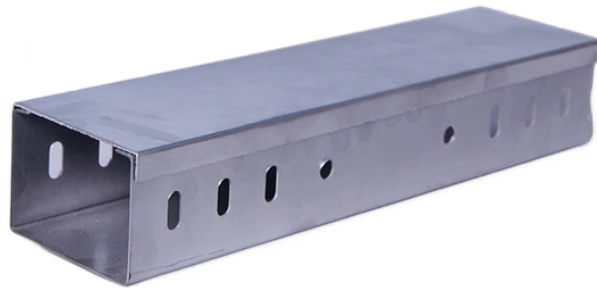


50mm cable tray thickness



50mm cable tray thickness



FDG CABLE TRAY ng; Power, Data, and Audio Visual. A quick and easy system to install without the need for specialised tools or equipment, makes it a first choice for Comm solution that works for your ...



Medium Duty Straight Flange Perforated Cable Trays Medium Duty Straight Flange ... Note : Above size are standard, any size can be offered.



Perforated cable trays have three load carrying capabilities: Heavy Duty Return Flange, Medium Duty Return Flange and Light Duty. And offer a good ventilation to cables, are generally used for ...



Complete cable tray sizing guide with standard size chart, NEC calculation methods, and real engineering examples. Learn how to select the right cable tray dimensions for your project.



When fitting cable trays and their accessories, the products are cut on site to create changes of direction, adjust sections, etc. Damage can also occur during handling; as a result, both the ...



The technical data sheet provides specifications for perforated cable trays manufactured by Bajrang Electrical & Fabricators including standard tray widths of 450, 300, and 150mm, side flange thickness ...



As per the NEC, the maximum allowable rung spacing is 9 inches (230 mm) when cable tray carries sin-gle-conductor cables of 1/0 to 4/0 AWG (American Wire Gauge) (Appendix I).



Explore standard sizes by tray type, understand width and depth limits, and see how to calculate and choose compliant cable tray sizes for real projects.



Learn how to calculate the perfect cable tray size and dimensions for your electrical project. This guide covers load capacity, fill ratios, and industry standards.



With side height 50mm. Perforated Cable Tray System crafted from premium hot-dip galvanized steel, offering protection against corrosion.



Explore standard sizes by tray type, understand width and depth limits, and see how to calculate and choose compliant cable tray sizes for real projects.



The Ladder Tray features light, rugged, tubular steel construction. It is designed for mechanical support and strain relief in long runs of cable and creates a smooth gradual bend for cable. Rail and stringer ...

Contact Us

For more information, pricing, or custom data center solutions, please contact us:

Website: <https://yoahorroenergia.es>

Email: hello@yoahorroenergia.es

Phone: +233 54 318 7269

Address: Plot 28, Spintex Road, Accra, Greater Accra, Ghana

This document is for informational purposes only. Specifications subject to change without notice.

