

# 80-degree downward bend in cable tray



## 80-degree downward bend in cable tray



HellermannTyton GÇÖs low voltage raceway (TSR) is a one piece, non-metallic, adhesive backed, latching raceway designed to aesthetically organize and route communications wires, including high ...



Calculate the minimum required bend radius by multiplying the cable's outside diameter by its bending factor (e.g., 10x for multicore). Then, select a standard tray fitting (300mm, 450mm, etc.) that ...



Step-down splice plates should be designed and placed so as to maximize the rigidity of the cable tray, unless step-down splice plates are part of a system specifically designed for other placement, ...



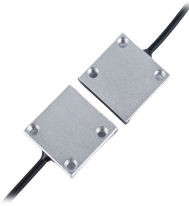
Guide for making bends, tees, crosses, risers and reducers from straight sections of wire basket cable trays live at the project.



Eaton's submittal builder tool for B-Line series cable ladder and tray allows you to easily filter, select and download straight section, fitting and accessory submittals.



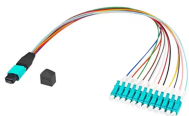
Discover vertical bends cable tray with fireproof, corrosion-resistant materials like stainless steel & aluminum. Ideal for industrial cable management.



Use this guide to learn the most effective installation practices when installing Cablofil tray. Each example of bends and tee's clearly illustrate proper tray cutting combined with recommended usage ...



The quickest up-and-down bends in the industry. Shrink your installation time to just minutes per bend with zero cutting required on thousands of bends in a single project.



When fitting cable trays and their accessories, the products are cut on site to create changes of direction, adjust sections, etc. Damage can also occur during handling; as a result, both the ...



**Vertical vs Horizontal vs Compound Offset**  
Depending on the layout of your facility, your cable tray will need to maneuver in different directions to avoid clashes: Vertical Offsets: Route the tray up toward ...

## Contact Us

For more information, pricing, or custom data center solutions, please contact us:

Website: <https://yoahorroenergia.es>

Email: [hello@yoahorroenergia.es](mailto:hello@yoahorroenergia.es)

Phone: +233 54 318 7269

Address: Plot 28, Spintex Road, Accra, Greater Accra, Ghana

This document is for informational purposes only. Specifications subject to change without notice.

