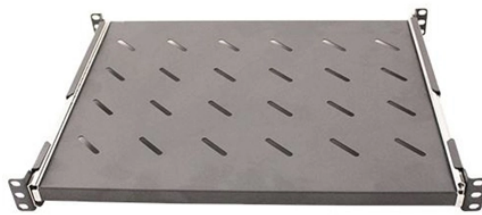


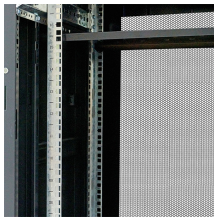
Adaptive Single-Mode Optical Module



Adaptive Single-Mode Optical Module



Small Form-Factor Pluggable (SFP) Single Mode Transceiver Altronix P1SM10 are hot-pluggable SFP fiber transceiver modules and are readily usable with all Altronix Spectrum fiber optic equipment for ...



In this exploration, we delve into the realm of 1G SFP optical modules, uncovering their versatile features, their role in building efficient networks, and how they contribute to the adaptability ...



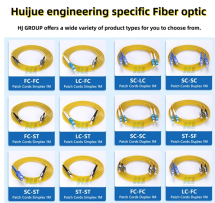
Learn how to choose and optimize 1G SFP modules. Compare specs, fiber vs copper types, troubleshooting tips, and best practices for reliable networks.





As a hotpluggable module with a standard duplex connector for fiber ...





Learn how to plan a future-proof optical upgrade with adaptive transceivers, reach math, compatibility checks, and troubleshooting for real data centers.


 <p>Huijue engineering specific Fiber optic <small>HJ GROUP offers a wide variety of product types for you to choose from.</small></p>	<p>Comprehensive Optical Transceivers & SFP Module for High-Speed Networks LINK-PP offers a full range of optical transceivers and SFP module for modern data centers, telecom networks, and ...</p>
---	--

	<p>Our 1 Gigabit Singlemode SFP Transceivers offer high-performance, reliable connectivity for singlemode fiber optic networks. These transceivers are engineered for long-distance applications, supporting ...</p>
---	--

	<p>The Broadcom® AFCT-57H5MZ optical transceiver supports high-speed serial links over single-mode optical fiber at signaling rates up to 57.8 Gb/s PAM4 (the serial line rate of 64GFC). The product is ...</p>
--	--

	<p>As a hotpluggable module with a standard duplex connector for fiber communications, the 2A-137G works with single-mode-fiber (SMF) connections and operates at a nominal wavelength of 1310 nm ...</p>
---	---

	<p>Powered by a high-efficiency 1310 nm wavelength Fabry-Pérot laser diode, the transceiver supports data rates of up to 1.25 Gbps over a reach of up to 20 km on duplex single-mode fiber optic cables.</p>
---	--

	<p>SFP+ transceiver that supports 10G connections up to 10 km using single-mode fiber with a duplex LC UPC connector.</p>
---	---

Contact Us

For more information, pricing, or custom data center solutions, please contact us:

Website: <https://yoahorroenergia.es>

Email: hello@yoahorroenergia.es

Phone: +233 54 318 7269

Address: Plot 28, Spintex Road, Accra, Greater Accra, Ghana

This document is for informational purposes only. Specifications subject to change without notice.

