

# **Airport rack DC power distribution unit remote monitoring type**



## Airport rack DC power distribution unit remote monitoring type



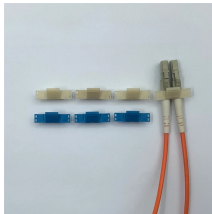
Introducing Delta's rRPP (rack-mount remote power panel): Tailored for small data centers, server rooms, and network closets with high power density. Ensure maximum reliability and uptime with real ...



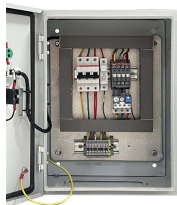
Opt for metered-type models with branch circuit breakers, LED current displays and optional SNMP for remote monitoring. Simplify power management like never before.



Metered rack Power Distribution Units (PDUs) provide real-time remote monitoring of connected loads. User-defined alarms warn of potential circuit overloads before critical IT failures occur.



Metered Rack PDUs provide real-time remote monitoring of connected loads. User-defined alarms warn of potential circuit overloads before critical IT failures occur.



FS offers six types of rack PDUs, from basic to advanced intelligent models, providing precise power distribution, real-time monitoring, and remote management. Explore FS PDU solutions today!



Vertiv™ PowerIT Monitored rack PDUs (rPDU) provide a comprehensive view of power usage, both at the rack and via remote access while continuing to provide reliable power distribution to critical IT ...



Experience the ease of ViFlow rPDU installation, with its adaptability to any racks and space-saving efficiency. Opt for metered-type models with branch circuit breakers, LED current displays and ...



Optimize your data center by right sizing IT environments to lower total cost of ownership. Metered Rack PDUs include real power monitoring, a temperature/humidity sensor port, lock.



Custom load-specific distribution blueprints designed for maximum power density and thermal stability across your whitespace. Built in our state-of-the-art US facility using premium components from ...



Every unit offers intelligent, programmable control of current, voltage, and temperature at the individual port level. Users can configure startup sequencing, fault limits, and real-time alerts.

## Contact Us

For more information, pricing, or custom data center solutions, please contact us:

Website: <https://yoahorroenergia.es>

Email: [hello@yoahorroenergia.es](mailto:hello@yoahorroenergia.es)

Phone: +233 54 318 7269

Address: Plot 28, Spintex Road, Accra, Greater Accra, Ghana

This document is for informational purposes only. Specifications subject to change without notice.

