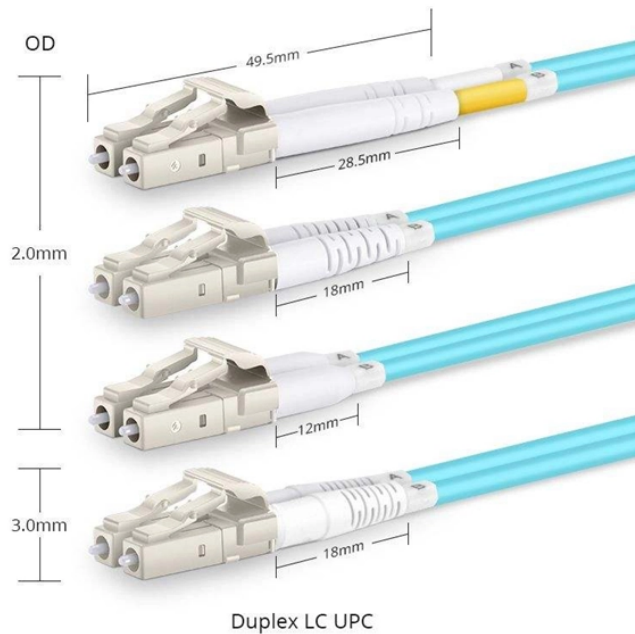


Attenuation of 24-core optical fiber



Overview

Attenuation in fiber optics is the gradual loss of light signal strength as it travels through a fiber cable. A standard single-mode fiber operating at 1550 nm loses. The most fundamental parameter for optical fiber is geometry, since the dimensions of the fiber determine its ability to be spliced and terminated to other fibers. It focuses on decibels (dB), decibels per milliwatt (dBm), attenuation and measurements, and provides an introduction to optical fibers. There are no specific requirements for this document. This document is not restricted to specific software and hardware versions. " The core and cladding are usually made of ultra-pure glass, although some fibers are all plastic or a glass core and plastic cladding.

Attenuation of 24-core optical fiber



Attenuation limits the distance in which the signal can travel through optical fiber and is measured in decibels (dB). It can either be inherent within the glass, known as intrinsic attenuation, or it can be ...



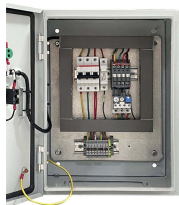
Optical attenuation in an optical fiber is one of the most important issues affecting all applications that use optical fibers. A number of factors may contribute to fiber attenuation, such as material ...



This Article Discusses an Overview of What is Attenuation, Used in Optical Fiber Cable, Causes, Different Types, and Its Coefficient



While manufacturers have other specs that concern them, like numerical aperture (the acceptance angle of light into the fiber), ovality (how round the fiber is), concentricity of the core and cladding, etc., ...



As the distance light travels through an optical fiber increases, the light's strength decreases; this phenomenon is known as "fiber attenuation." It is also known as fiber loss or signal loss.



It focuses on decibels (dB), decibels per milliwatt (dBm), attenuation and measurements, and provides an introduction to optical fibers. There are no specific requirements for this document. ...



Attenuation causes light to weaken as it travels through fiber optic cables. Learn why it happens, what affects it, and how engineers measure and manage it.



Learn how inherent material properties and external factors like bending cause measurable signal loss (attenuation) in optical fiber networks.



The attenuation of the optical fiber is a result of two factors, absorption and scattering. The absorption is caused by the absorption of the light and conversion to heat by molecules in the glass.



Attenuation refers to the amount of signal loss as it travels down the fiber, typically expressed in dB/km. Losses can be caused by scattering, absorption, dispersion & bending.

Contact Us

For more information, pricing, or custom data center solutions, please contact us:

Website: <https://yoahorroenergia.es>

Email: hello@yoahorroenergia.es

Phone: +233 54 318 7269

Address: Plot 28, Spintex Road, Accra, Greater Accra, Ghana

This document is for informational purposes only. Specifications subject to change without notice.

