

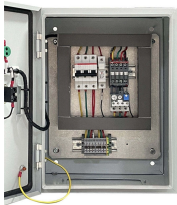
# Best Method for Pre-installing Low-Voltage Cable Conduit into Cable Trays



## Best Method for Pre-installing Low-Voltage Cable Conduit into Cable



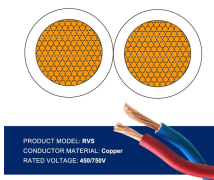
This guide covers the critical steps, from selecting the right electrical cable tray and performing accurate cable fill calculations to managing a safe cable pull through and ensuring all bonding and grounding ...



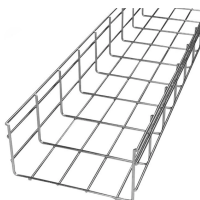
Cable tray layout must take into consideration the design limits of the cable. To minimize damage and verify integrity after installation, follow the practices outlined in cable handling and testing procedures ...



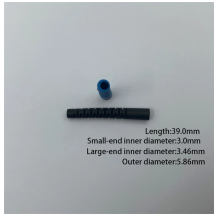
This method statement outlines the procedures for installing cable trays and conduits, including: 1) preparing materials and tools, 2) erecting supports and scaffolding, 3) cutting, drilling, and joining tray ...



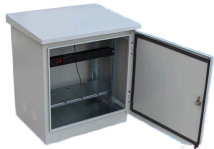
Low-voltage systems depend on proper pathways long before cable is pulled. This article explains why conduit, trays, and cable routes are critical to commercial low ...



This document provides information for engineers, technicians, and trades/crafts people to avoid potential wire or cable damage during installation, testing, and modification of cable systems at ...



From selecting the types of conduits to addressing common installation issues, this article provides everything you need to know for installing low-voltage conduit.



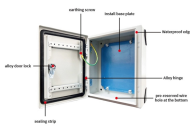
Learn the best practices for installing cables in trays. This guide covers essential steps, technical requirements, and key details for efficient cable tray installation.



Step-by-step cable tray and conduit installation method with safety, quality and inspection procedures as per IEEE standards.



Whether you're building a commercial setup or upgrading an industrial plant, proper cable tray installation ensures neat wiring, safe access, and easy maintenance. But before you lay the first ...



While pulling, in order to eliminate sharp bend and crossovers, always have a person feed the cable(s) straight into the conduit by hand or, for larger cables, over a large diameter sheave.



Low-voltage systems depend on proper pathways long before cable is pulled. This article explains why conduit, trays, and cable routes are critical to commercial low-voltage success—and how poor ...

## Contact Us

For more information, pricing, or custom data center solutions, please contact us:

Website: <https://yoahorroenergia.es>

Email: [hello@yoahorroenergia.es](mailto:hello@yoahorroenergia.es)

Phone: +233 54 318 7269

Address: Plot 28, Spintex Road, Accra, Greater Accra, Ghana

This document is for informational purposes only. Specifications subject to change without notice.

