

## Burial depth of direct-buried optical cable lines



### Overview

Bury cables from 12-36 inches (or 30-90 cm) deep. Where plant life, sidewalks, and other utilities already disrupt earth, it's safer to bury at as little as 24 inches or 60 cm, using protective conduits to limit the likelihood of damaged cables by inexperienced maintenance or. Bury cables from 12-36 inches (or 30-90 cm) deep. However, simply hitting this depth isn't enough to guarantee your network survives. Factors like the. When planning a fiber optic network installation, one of the most common questions is: How deep are fiber optic cables buried?

Proper burial depth is critical for the safety, durability, and performance of your communication infrastructure. This guide provides a comprehensive overview of industry. The expected burial depth for communication cables varies significantly depending on the cable's function and its location. A common cable type is the residential drop, which is the line running from the utility connection box to an individual home. Corning Optical Communications recommends that fiber recommended de cm). Burial depths are guided by.

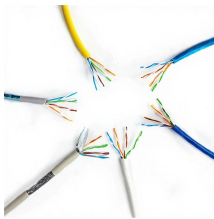
## Burial depth of direct-buried optical cable lines



Burying these cables protects them from physical damage, weather, and unauthorized access, but the depth varies based on location, cable type, and local regulations. Typically, burial ...



Use this calculator to estimate a minimum burial depth (cover) for underground runs such as residential power, commercial feeders, low-voltage/data, and fiber.



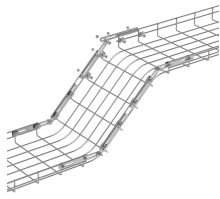
Proper burial depth is critical for the safety, durability, and performance of your communication infrastructure. This guide provides a comprehensive overview of industry standards, best practices, ...



Burial depth standard for direct buried optical cable. The burial depth of the direct-buried optical cable shall meet the relevant provisions of the engineering design requirements of the communication ...



Learn how deep fiber optic cable is buried, key factors affecting buried fiber optic cable depth, and best practice for underground optical fiber installation.



For example, direct-buried fiber optic cables often require a depth of 24 to 36 inches in residential areas and up to 48 inches in high-traffic zones like under roads or commercial parking lots.



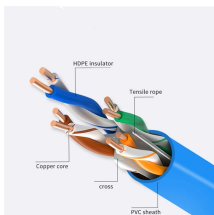
Personnel feeding cable into a feed-chute must make sure that they do not position themselves inside a cable loop. Hearing protection may be required by vehicle operators. Pre-ripping provides a safety ...



Burying these cables protects them from physical damage, weather, and unauthorized access, but the depth varies based on ...



Proper burial depth is critical for the safety, durability, and performance of your communication infrastructure. This guide provides a comprehensive overview of ...



Direct buried fiber optic cable installation practices are essentially the same as those used for placing copper cable. The following methods of direct burial of fiber optic cables will be addressed: plowing ...



Wondering how deep is fiber optic cable buried? We explain the NEC requirements (usually 24-30 inches) and why you need Armored Cable for direct burial projects.



Fiber optic cables are typically buried between 12 and 36 inches (30-90 cm), depending on installation environment, soil conditions, and load requirements. In high-load areas such as roads or backbone ...

## Contact Us

For more information, pricing, or custom data center solutions, please contact us:

Website: <https://yoahorroenergia.es>

Email: [hello@yoahorroenergia.es](mailto:hello@yoahorroenergia.es)

Phone: +233 54 318 7269

Address: Plot 28, Spintex Road, Accra, Greater Accra, Ghana

This document is for informational purposes only. Specifications subject to change without notice.

