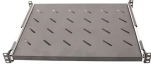


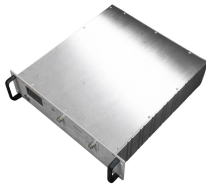
# Cable tray climbing slopes and bends



## Cable tray climbing slopes and bends



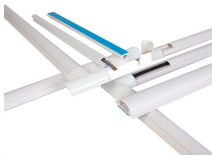
Different types of bends Including horizontal/vertical/tee /cross/reducer L-Type Jointing Coupler Horizontal bend for perforated and ladder type cable tray Horizontal Bend For Ladder Cross For ...



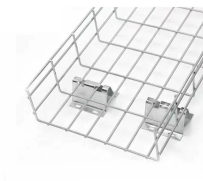
Cut, bend, and connect the wire mesh trays to route cable and hose in configurations such as curves, slopes, and tees. They are a lightweight option for organizing bundles of cable and hose while ...



Cable trays produced using robotic welding systems provide maximum structural durability. This allows them to be safely used in challenging work environments with high load-carrying capacity.



Explore all types of cable trays—ladder, perforated, basket, solid, and channel. Learn their uses, materials, pros, cons, and key differences.



Refers to the approximate height of a cable tray used for specifying. Selecting a specific height will show cable trays with that height, as well as cable tray accessories compatible with that height.



**Zinc-Plated Steel Formable Cable Trays and Fittings** The zinc plating on these tray systems offers good corrosion resistance. Cut, bend, and connect the wire mesh trays to route cable and hose in ...



**Resources For Electrical & Electronic Engineers**  
**Cable Tray Ladder Trunking Wire Basket**  
**Installation Guidelines** What Are Cable Trays? An assembly of units/sections with associated fittings that form a ...



**Chalfant Ladder Cable Tray Systems** are ideal for indoor and outdoor cable management. They provide reliability, ease of installation, and cost savings both initially and long term.



Our cable tray design considerations guide details key factors to consider when designing cable tray systems for industrial and commercial applications. Browse or download the cable tray catalog for ...



This document provides information about cable trays and accessories, including straight cable trays, perforated trays, returned edge and flange types, and bent ...



Cable tray installed in a hazardous location must contain only those cables that are appropriate for this type of environment as defined in Chapter 5 of the NEC.



The Ladder Tray features light, rugged, tubular steel construction. It is designed for mechanical support and strain relief in long runs of cable and creates a smooth gradual bend for cable. Rail and stringer ...

## Contact Us

For more information, pricing, or custom data center solutions, please contact us:

Website: <https://yoahorroenergia.es>

Email: [hello@yoahorroenergia.es](mailto:hello@yoahorroenergia.es)

Phone: +233 54 318 7269

Address: Plot 28, Spintex Road, Accra, Greater Accra, Ghana

This document is for informational purposes only. Specifications subject to change without notice.

