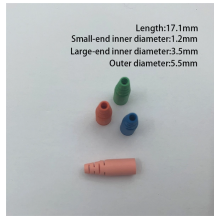


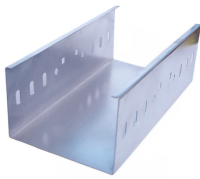
Cable tray pipe joint sleeve



Cable tray pipe joint sleeve



We offer a full line of tube clamps and pipe clamps along with the hardware to match your needs. Widely deployed in power generation, petrochemical, food processing, and semiconductor manufacturing, ...



Ventilated Cable Tray Cover, 12in Wide, 3.3ft Long, Cablo CVN 300PG. 1 pkg = (3) 3.3ft Covers for (1) 10ft Tray



Delta manufactures a complete range of cable tray accessories, including cable tray joint couplers, mounting brackets, joint plates, sleeves, perforated cable tray accessories, and ladder-type cable ...



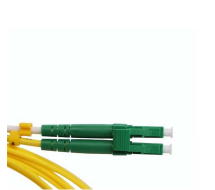
Panduit's cable sleeves, tools, and wraps are high-quality to protect wires, cables, and tubing against abrasion. Find your Panduit distributor today.



These special heavy duty tray hold down cable tray clamps and expansion guides are ideal for fastening tray to C-Channels and beams, such as those found on bridges.



Eaton's submittal builder tool for B-Line series cable ladder and tray allows you to easily filter, select and download straight section, fitting and accessory submittals.



Cut, bend, and connect these wire mesh tray systems to route cable and hose in configurations such as curves, slopes, and tees. They are a lightweight option for organizing bundles of cable and hose ...



Wall sleeves are designed to facilitate cable tray transitions between rooms or into and out of buildings.



Please click the appropriate link below to view the catalog section as a PDF.



This add-in automatically creates a series of Sleeves through walls, floors, and beams for MEP objects such as pipes, ducts, cable trays, and conduits. The main features are as follows:

Contact Us

For more information, pricing, or custom data center solutions, please contact us:

Website: <https://yoahorroenergia.es>

Email: hello@yoahorroenergia.es

Phone: +233 54 318 7269

Address: Plot 28, Spintex Road, Accra, Greater Accra, Ghana

This document is for informational purposes only. Specifications subject to change without notice.

