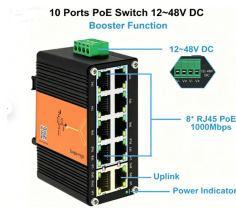


Cable trays can be overhead



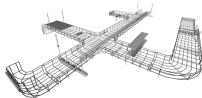
Cable trays can be overhead



Hubbell's NEXTFRAME® Ladder Tray is the effective and widely used cable runway that supports and delivers bundles of cable between cabinets, racks, and closets, along walls, and suspended from ...



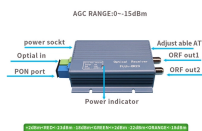
Modern data centers could not survive without proper overhead cable management. Learn all about cable pathway systems such as cable tray & cable runway.



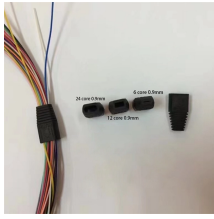
Several types of overhead cable support systems are available, each with its own characteristics and suitability for different applications. The choice of system depends on factors such as cable weight, ...



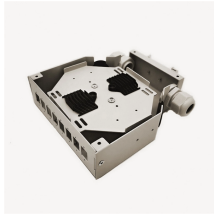
Steel cable tray for overhead data and low-voltage wiring. Stackable over Track Busway systems in suspended, double-deck layouts.



The Wire Basket Overhead Cable Tray Routing System is composed of pathways, splices, mounting brackets, and accessories that allow the system to be configured for a wide range of applications and ...



Cable Tray and Cord Reels Precision engineered. Constructed from high-quality welded steel wire, Cablofil® Wire Mesh Cable Tray is the result of decades of research and over 94,000 miles of ...



Yes, wire mesh baskets and cable trays can be installed vertically or overhead, and they absolutely should be in many cabling projects.



Explore all types of cable trays—ladder, perforated, basket, solid, and channel. Learn their uses, materials, pros, cons, and key differences.



Compare direct burial, conduit, cable tray, and overhead installation methods — costs, protection, scalability, and how to choose the right one for your project.

Contact Us

For more information, pricing, or custom data center solutions, please contact us:

Website: <https://yoahorroenergia.es>

Email: hello@yoahorroenergia.es

Phone: +233 54 318 7269

Address: Plot 28, Spintex Road, Accra, Greater Accra, Ghana

This document is for informational purposes only. Specifications subject to change without notice.

