

## Can the lc be plugged into the sc interface



### Overview

Q: Can I plug an SC cable into an LC SFP port?

A: No. You must use a fiber patch cord with LC on one end (to plug into the SFP) and SC on the other end (to plug into your fiber patch panel). Q: Why are SC connectors preferred for FTTH?

This guide cuts through the jargon to explain the real technical differences, the specific use cases for each (Standard Enterprise vs. PON), and how to choose the right form factor for your Wolon SFP transceivers. To understand the. Although SFP modules share a standardized form factor, the connector type determines how the module physically interfaces with fiber, influencing patch cable selection, fiber management, and future scalability. They are commonly used in Fiber-to-the-Antenna (FTTA) and Common Public Radio Interface (CPRI) applications to connect remote radio units on cell towers to base. Small Form-factor Pluggable (SFP) modules are compact, hot-swappable devices used in networking equipment to connect to fiber optic cables for data transmission. They are significantly smaller compared to SC connectors,

allowing for better.

## Can the lc be plugged into the sc interface



The SC connector is twice the size of the LC port. You must use a fiber patch cord with LC on one end (to plug into the SFP) and SC on the other end (to plug into your fiber patch panel).



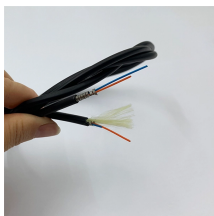
Among the most common connectors are LC and SC types, each designed for specific needs and environments. This article delves into the differences between LC and SC fiber ...



all SFP and SFP+ optics require LC connectors so the question becomes when you need single mode fiber or multi mode fiber but the connector type is clear. SC square connectors are too ...



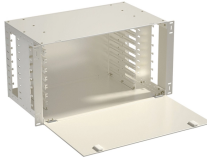
Q: Can we connect the SC and LC SFP modules? A: To connect them, you need an LC-SC patch cable, and you should ensure that the length and data speed are compatible.



Once the ODVA connector is unlocked and removed, the internal LC connectors can plug into any conventional LC port if needed. The same goes for SC and MPO versions - they use standard ...



A3: Yes, SC connectors can be used in data centers, but LC connectors are often preferred due to their higher port density and space efficiency in high-density environments.



When existing fiber infrastructure terminates with SC connectors, adapters or hybrid patch cables are required to interface with LC-based SFP modules. This approach preserves existing cabling while ...



LC connectors are half the size of SC SFP connectors, measuring just 1.25mm in diameter. They utilize a latch-lock mechanism, which is similar to an RJ45 Ethernet connector, ...



LC and SC connectors rely on fundamentally different latching mechanisms, and this influences both form and function during deployment. The SC connector uses a push-pull design secured by a robust ...



Small Form-factor Pluggable transceivers rely on standardized interfaces to plug into optical fiber cables. The connector type at each end of the fiber link governs mating compatibility, ...

## Contact Us

For more information, pricing, or custom data center solutions, please contact us:

Website: <https://yoahorroenergia.es>

Email: [hello@yoahorroenergia.es](mailto:hello@yoahorroenergia.es)

Phone: +233 54 318 7269

Address: Plot 28, Spintex Road, Accra, Greater Accra, Ghana

This document is for informational purposes only. Specifications subject to change without notice.

