

# Check Fibre Channel Card Model



## Overview

Here is a step by step guide to verify that your FC HBAs installed and configured correctly. Run the `lspci` command to list all PCI cards detected on the system. If the drivers are not offered by your. Tutorial/Cheatsheet: Beginner's Guide to Understanding Device Mapper Multipath for Linux NOTE: The commands to validate this may vary based on the type of HBA being used so I will show some commands and examples for Emulex HBA card where these commands can be used. I cannot assure if the same would. Download the free app and enjoy breathtaking views with a new background each day. Tool for discovery of SAN resources and configuration information on your Fibre Channel SAN Important! Selecting a language below will dynamically change the complete page content to that language. For. Fibre Channel (FC) Host Bus Adapters (HBA) are interface cards that connects the host system to a fibre channel network or devices. Displays locally registered applications.

## Check Fibre Channel Card Model



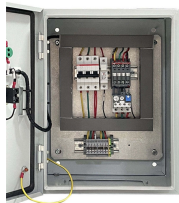
This chapter describes the Cisco NX-OS Fibre Channel, virtual Fibre Channel, and Fibre Channel over Ethernet (FCoE) show commands available on Cisco Nexus 5000 Series switches.



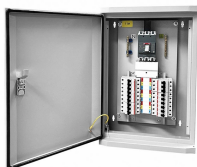
Displaying Fibre Channel Devices The commonly used commands for adding, removing, and displaying FC devices are as follows: fcinfo – Collects and displays administrative information about FC-HBA ...



NOTE: The commands to validate this may vary based on the type of HBA being used so I will show some commands and examples for Emulex HBA card where these commands can be used.



Step 1: Identify the HBAs' manufacturer and model. To view a list of all PCI cards found on the system, use the lspci command. Step 2: Get the HBAs' Vendor and Device IDs installed. These ...



Tool for gathering configuration information on your Fibre Channel SAN based on the SNIA HBAAPI for management of Fibre Channel Host Bus Adapters and discovery of SAN resources.



Step-1: Determine the Manufacturer and Model of the HBAs. Run the `lspci` command to list all PCI cards detected on the system.



check how many hosts (Ports/Cards) are there in your Linux machine using below command. `host3`  
Using below command find if FC HBA is Online or Offline Or Link Status. If link status is down also ...



There are several commands to determine the WWN of a Fibre Channel (FC) HBA and their status (online/offline). The post discusses few of the most commonly used methods.



Quick check on WWN names ... Check Port status ... More detailed output ... Once you have connection, you can verify the device detection on the ports.

## Contact Us

For more information, pricing, or custom data center solutions, please contact us:

Website: <https://yoahorroenergia.es>

Email: [hello@yoahorroenergia.es](mailto:hello@yoahorroenergia.es)

Phone: +233 54 318 7269

Address: Plot 28, Spintex Road, Accra, Greater Accra, Ghana

This document is for informational purposes only. Specifications subject to change without notice.

