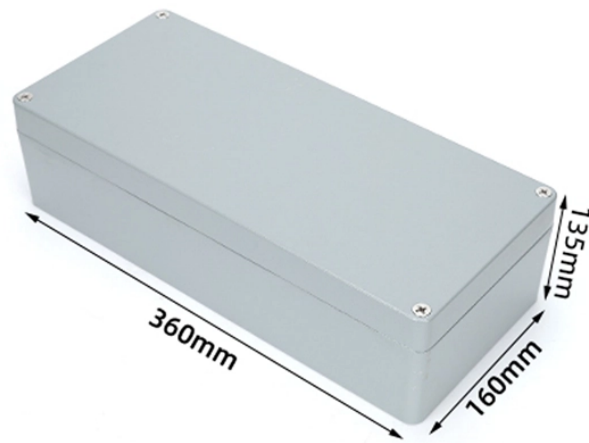







# Cold Shrink Cable Junction Box



## Cold Shrink Cable Junction Box

|   |  |
|---|--|
|  <p>The diagram, titled 'INSTALLATION METHOD', illustrates the process of connecting a CSJD to different cable types: tape shielded, LC shielded, JCN, and flat-strap shielded cables. It shows the removal of the outer jacket and the application of the cold shrink sleeve to the conductors and shields, followed by the connection to standard 'I', 'Y', and 'H' insulated cable buses.</p> | <p>Designed for 1 core shielded power cable (15 - 28 kV) applications, the CSJD connects tape shield, LC shield, JCN and flat-strap shielded cable to standard "I", "Y" and "H" insulated cable buses.</p>               |
|  <p>The image shows a 3M electrical splice where multiple conductors are joined together using a cold shrink sleeve. The sleeve is partially unwound, demonstrating the ease of installation.</p>  | <p>3M electrical splices feature cold shrink technology, which is engineered for easy installation by unwinding the inner core. Reduce the time, labor and cost that comes with electrical cable splicing. ...</p>       |
|  <p>The image shows a yellow toolbox filled with various cold shrink cable termination components, including sleeves, splices, and tools, ready for use.</p>  | <p>That's why we invented Cold Shrink technology: a revolutionary alternative to traditional heat shrink cable joints and terminations that can be installed in a fraction of the time, without the need for ...</p>     |
|  <p>The image shows a hand holding a cold shrink cable termination sleeve, which is being applied to a cable. The sleeve is designed to provide a secure and reliable connection.</p>  | <p>Excellent performance: The cold shrink terminations and cable joints are made of high-quality silicone rubber material. It not only has excellent hydrophobic performance but also does not form conductive ...</p>   |
|  <p>The image shows a single cold shrink cable termination sleeve, highlighting its spiral rip cord design and hold-out core.</p>  | <p>Cold shrink cable terminations provide a quick, easy, safe and cost effective installation. No installation tools required, spiral rip cord design unwinds easily and enables quick removal of the hold-out core.</p> |



Eaton Cooper Power series EZ II Splice, Single piece cold shrink re-jacketing kit, 15 kV, AC 1 min: 35 kV, DC 15 min: 70 kV, BIL: 110 kV, Cable insul: 0.64-0.91 inch, Strand A: 1/0 AWG, Solid A: 2/0 AWG, Al ...



The ColdFit™ outdoor PCT (with sheds) and indoor PICT (without sheds) are medium-voltage cold-shrink polymer terminations designed for fast, easy, and reliable installation.



WOER offers premium cold shrink jointing kits including LV 1-5 core, MV 1-core & 3-core options, plus cast resin straight-through and branch joints. Get your reliable cable solutions today!



After the resin solidified, it becomes a compact coffin box to resist water and vapor from the outside of the splice. This coffin box also has outstanding mechanical performance and anti-explosion ...



Nexans cold-shrink joints for up to 36 kV cables offer easy, fast installation with integrated functions and factory-installed accessories, suitable for single-core, paper or polymeric insulated cables.



Both the silicone polymer housing and the stress relief material are assembled on a spiral support tube. This enables the installer to apply the termination on the cable with a high degree of ease and ...

## Contact Us

For more information, pricing, or custom data center solutions, please contact us:

Website: <https://yoahorroenergia.es>

Email: [hello@yoahorroenergia.es](mailto:hello@yoahorroenergia.es)

Phone: +233 54 318 7269

Address: Plot 28, Spintex Road, Accra, Greater Accra, Ghana

This document is for informational purposes only. Specifications subject to change without notice.

