

# **Cold-jointed square head**



## Cold-jointed square head



Is it the common cold, the flu or COVID-19? Our infection prevention expert helps you tell the symptoms apart so you can seek the best treatment.



The common cold is an upper respiratory tract infection caused by many different viruses. The common cold is transmitted by virus-infected airborne droplets or by direct contact with infected secretions. ...



Boltport is a manufacturer of Square Head Bolts in metric and imperial sizes with ...



Browse Square Head Set Screws in the Cold Headers, Inc. catalog including Cup Point Square Head Set Screws, Square Head Set Screws, Cup Point Slotted Headless Set Screws, Hi-Collar Helical ...



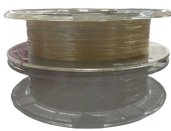
With added strength and durability from cold forming, our custom square head screws ensure reliable connections and long-lasting performance regardless of application.



The common cold is an upper respiratory infection that affects your nose, throat, sinuses and windpipe. Colds usually go away on their own within a week to 10 days.



While you might be familiar with the common cold, there are some things to know about this condition that can help you feel better, avoid future colds, and reduce the spread of a virus.



Learn about the common cold, its causes and spread, signs and symptoms and ways to prevent it.



RC Fasteners offers square head set screws engineered for secure, externally tightened fastening of shafts, pulleys, collars, couplings, and other critical mechanical components. The square head ...



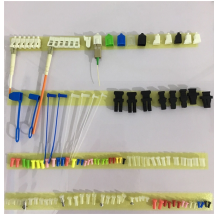
Portland Bolt manufactures square bolts from 1/2" diameter through 2" diameter in most ASTM, AASHTO, and SAE specifications. Special tooling can be created to produce nonstandard head ...



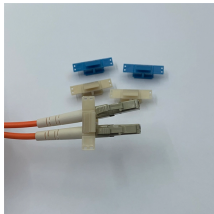
In adults or children, a common cold that lasts a while can lead to swelling and pain in the sinuses. These are air-filled spaces in the skull above the eyes and around the nose.



AFT Fasteners provides a helpful resource on square head bolts including: dimensions, material, hardness, tensile strength and tolerance on length.



Standard diameters for square head bolts & screws range from 1/4 to 1-1/4 inches. Metric diameters from M8 to M32. \*Lots sizes starting at 5,000 pieces.



Choose from our selection of square head bolts, including square head screws, set screws, and more. Same and Next Day Delivery.



Boltport is a manufacturer of Square Head Bolts in metric and imperial sizes with coarse, fine, extra fine, and custom threads to various dimensional standards and material specifications.



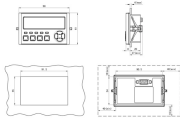
The meaning of COLD is having or being a temperature that is uncomfortably low for humans. How to use cold in a sentence.



The square head design offers excellent grip and reduces the risk of tool slippage, making these screws ideal for field work, repairs, and environments where fast, reliable tightening is essential.



Common cold symptoms tend to affect the upper airways, like the nose, head, and throat. Learn how symptoms progress with a viral cold.



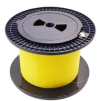
All Fastco cold headed fasteners are proudly "Made in the USA" in our manufacturing facilities. Fastco Industries produces a wide variety of fasteners using the cold heading process as the basic forming ...



With added strength and durability from cold forming, our custom ...



Symptoms for COVID-19, the flu, a cold or an allergy can sometimes be hard to distinguish but here's how to tell what is ailing you.



Common types of colds include rhinovirus, coronaviruses, and human parainfluenza virus. Tests can determine the cause of your cold, but it's usually not necessary. Covering coughs ...

## Contact Us

For more information, pricing, or custom data center solutions, please contact us:

Website: <https://yoahorroenergia.es>

Email: [hello@yoahorroenergia.es](mailto:hello@yoahorroenergia.es)

Phone: +233 54 318 7269

Address: Plot 28, Spintex Road, Accra, Greater Accra, Ghana

This document is for informational purposes only. Specifications subject to change without notice.

