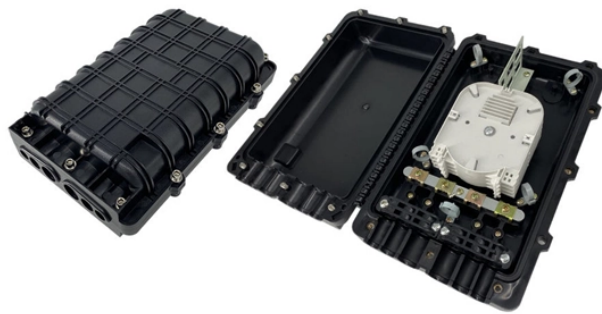



Communication Cable Tray Disassembly Solution






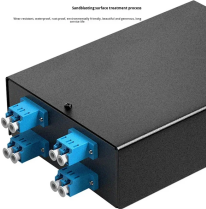
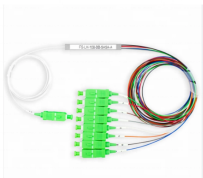
Overview

Carefully Disassemble the Tray Body For straight sections, you can lift and remove them as one piece to prevent damage. Be extra careful with aluminum or fiberglass trays to avoid bending or breaking them. Table: Key Steps for Cable Tray Demolition Preparation Once everything is ready, it's time to start the actual demolition. This part of the work requires precision and teamwork. Why use cable tray?

A properly designed and installed cable tray system provides outstanding reliability for a facility's control, communication, data, instrumentation and power systems cabling and wiring. All illustrations, descriptions and technical information included in this document are provided as indications and can cable trays are equivalent. The mechanical and electrical characteristics, tests, certifications, overall quality management, recommendations mentioned. Tangled and Disorganized Cables Usually, a tangled web of cables results from cables introduced during expansions without re-evaluation or routed without a predetermined strategy. Further aggravating the matter are missing cable separators, organizers, or routing channels. These requirements

ar Telecommunications Distribution Methods Manua  shall mean any enclosed channel for routing wire, cable or bu. General Installation and Assembly Instructions NOTICE: For installation by a qualified installer in accordance with all national and local electrical codes, communications standards, building codes, the following instructions and any instructions included with individual devices.

Communication Cable Tray Disassembly Solution

	<p>When fitting cable trays and their accessories, the products are cut on site to create changes of direction, adjust sections, etc. Damage can also occur during handling; as a result, both the ...</p>
	<p>As an industry leader in cable tray, Eaton offers one of the widest ranges of B-Line series cable management solutions in a variety of styles, materials and finishes to support virtually any industrial ...</p>
	<p>Quality Guidelines for Cable Tray Works This document outlines the quality guidelines and methodology for dismantling and re-installation of cable trunk covers in civil and electrical works.</p>
	<p>Learn about common cable tray failures, their causes, and practical solutions for ensuring the longevity and safety of your cable tray system, including corrosion, cracks, and grounding issues, ...</p>
	<p>b. Cut flexible tubing and/or straight tray sections to desired length (matching the vertical distance between the top of the cabinet/rack and the bottom of the side drop/spill over).</p>



Each of the cable tray systems shall be installed and supported in accordance with the manufacturer's instructions and as indicated on Contractor's submittal documentation, prior to final ...



Learn how to safely and effectively demolish cable trays. Our guide covers preparation, the demolition process, and post-demolition steps.



The work shall include materials, equipment and apparatus not specifically mentioned herein or noted on the plans but which are necessary to make a complete working ANSI/TIA/EIA and ISO/IEC compliant ...



To properly bond Hubbell ® painted cable tray, remove the plastic masking device from the trays on each end (exposing the pre-galvanized wire), and splice sections together using Hubbell ® splice kits.



This comprehensive guide investigates the most frequent wire management challenges faced in real-world setups and demonstrates how the correct cable tray accessories may address them.

Contact Us

For more information, pricing, or custom data center solutions, please contact us:

Website: <https://yoahorroenergia.es>

Email: hello@yoahorroenergia.es

Phone: +233 54 318 7269

Address: Plot 28, Spintex Road, Accra, Greater Accra, Ghana

This document is for informational purposes only. Specifications subject to change without notice.

