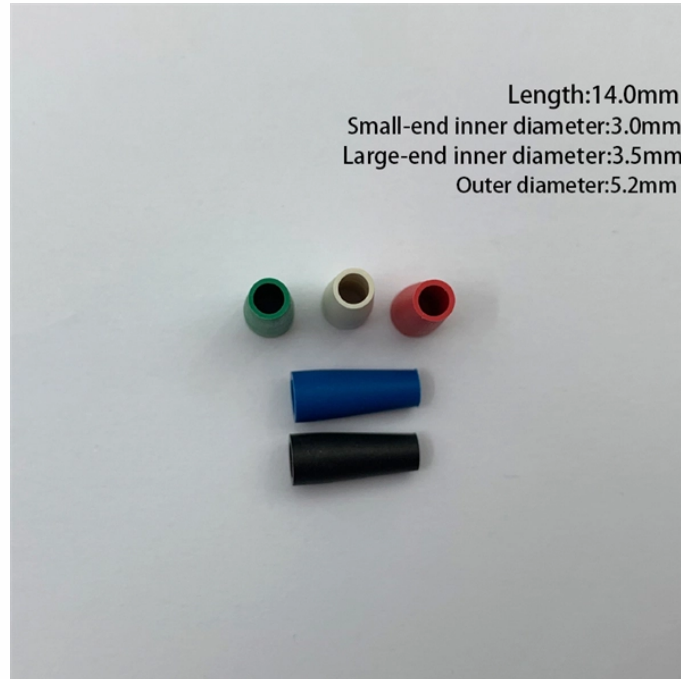


## Configuring Port Aggregation on Aggregation Switches



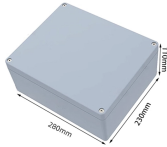
## Configuring Port Aggregation on Aggregation Switches



Chapter 1 Configuring Port Aggregation This chapter describes how to set the port aggregation of the switch.



Configuration of port aggregation involves grouping the physical ports into a logical bundle and assigning them a single IP address. This configuration ...



1. Configuring Port Aggregation This chapter describes how to set the port aggregation of the switch.



To learn how to configure an MC-LAG setup, see this guide. Find help and support for Ubiquiti products, view online documentation and get the latest downloads.



Configuring port aggregation on a UniFi switch is straightforward using the UniFi Network Controller (or UniFi OS Console). The process involves selecting the ports you wish to combine, ...



MS Series MX Series Configuring Link Aggregation between MS and Cisco Switches Link Aggregation is a nebulous term used to describe various implementations and underlying technologies. In ...



To enable traffic from VLAN 10 and VLAN 20 to pass through Layer 2 aggregate interface Bridge-aggregation 1, perform the following tasks: · Configure Layer 2 aggregate interface Bridge ...



Port aggregation is useful for implementing load balancing and provides a redundant link backup. To allow port aggregation, the basic configuration on all the ports must be consistent. The following list ...



When setting the aggregation states of the ports in an aggregation group, the system automatically chooses a member port as the reference port. A selected port must have the same operational key ...



Learn how to use Link Aggregation between UniFi switches or clients to increase bandwidth and redundancy. Everything you need to know

## Contact Us

For more information, pricing, or custom data center solutions, please contact us:

Website: <https://yoahorroenergia.es>

Email: [hello@yoahorroenergia.es](mailto:hello@yoahorroenergia.es)

Phone: +233 54 318 7269

Address: Plot 28, Spintex Road, Accra, Greater Accra, Ghana

This document is for informational purposes only. Specifications subject to change without notice.

