

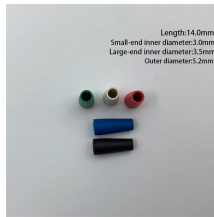
Conformal Cable Trays



Conformal Cable Trays



Explore all types of cable trays—ladder, perforated, basket, solid, and channel. Learn their uses, materials, pros, cons, and key differences.



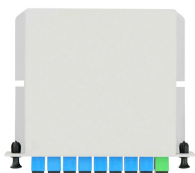
Calculate your height in cm or feet and inches using our height converter and chart, with conversion for imperial and US units to metric units.



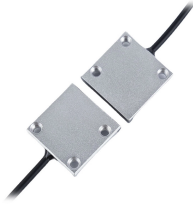
This is a very easy to use meter to centimeter converter. First of all just type the meter (m) value in the text field of the conversion form to start converting m to cm, then select the decimals value and finally ...



Meters to cm converter and how to convert.



Discover reliable and efficient cable tray systems for industrial applications. From solid to perforated and ladder trays, we deliver a complete system—tray sections, fittings, supports, and ...



Types of Cable Trays and Sizes Explore various cable tray types and sizes for electrical installations. Learn about ladder, perforated, solid-bottom, wire mesh, and channel trays in this complete guide.



Cable tray length is selected based on the load to be supported, the distance between the supports (also referred to as the span), and handling and installation constraints.



Instant free online tool for meter to centimeter conversion or vice versa. The meter to centimeter conversion table and conversion steps are also listed.



Explore cable tray systems and accessories for organized, accessible cable routing in commercial and industrial environments.



Convert meters to centimeters (m to cm) with the length conversion calculator, and learn the meter to centimeter formula.



Easy meters to cm conversion online using our m to cm converter. Free, easy to use tool, with calculation examples and formulas to help you convert meters to centimeters.



Choose from our selection of cable trays, including over 850 products in a wide range of styles and sizes. Same and Next Day Delivery.



The measurement of weight was based on the shi, which was equivalent to approximately 132 pounds. The Chi and Zhang were units of length equivalent to approximately 25 centimeters (9.8 inches) and ...



From heavy power cable pathways on oil drilling platforms to data center cabling, explore the cable tray that's strong yet easy to install. Fast installation with dependable support.



It is designed for mechanical support and strain relief in long runs of cable and creates a smooth gradual bend for cable. Rail and stringer material is 16 ga steel tubing.



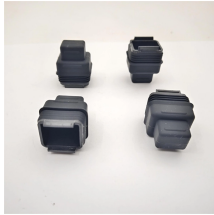
Easily convert between meters and centimeters with our user-friendly calculator. Perfect for quick calculations, homework, and measurement conversions.



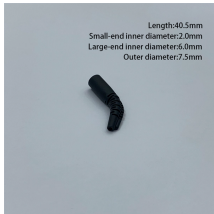
A. Test cable trays to ensure electrical continuity of bonding and grounding connections, and to demonstrate compliance with specified maximum grounding resistance.



How do you convert meters to centimeters?
Converting meters to centimeters is a simple process that involves multiplying the given measurement by 100. Since there are 100 centimeters in one meter, ...



There are a large number of cable tray fittings that are made compatible with each type of tray. These fittings help in maintaining support of the cable tray system. Shop Graybar's collection of cable tray ...



Online calculator to convert meters to centimeters (m to cm) with formulas, examples, and tables. Our conversions provide a quick and easy way to convert between Length or Distance units.

Contact Us

For more information, pricing, or custom data center solutions, please contact us:

Website: <https://yoahorroenergia.es>

Email: hello@yoahorroenergia.es

Phone: +233 54 318 7269

Address: Plot 28, Spintex Road, Accra, Greater Accra, Ghana

This document is for informational purposes only. Specifications subject to change without notice.

