

## Connection of low-voltage wires and distribution boxes



### Overview

Low-voltage wiring refers to insulated wire with non-metallic sheathing that transmits 50 volts or less of electricity. Standard power outlets in the United States and Canada carry 120V, and most lightin.



## Connection of low-voltage wires and distribution boxes



Learn the fundamentals and best practices of low voltage wiring to enhance the safety and efficiency of your electrical installations.



Many low-voltage professionals view NFPA 70 (National Electrical Code) as the domain of electricians. While the bulk of the requirements do apply to what we commonly refer to as “high voltage”, NFPA ...



Whether you're planning a DIY upgrade or hiring professionals, this guide breaks down the key concepts, wiring types, ...



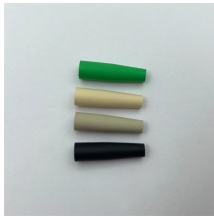
Renewable energy plants use distribution assemblies at transformer or inverter outputs to connect generation to the wider distribution system. In a modern LV board, each component must ...



Master low voltage wiring basics with this beginner-friendly guide. Learn key concepts, applications, and simple tips for safe and effective installation.



Follow expert methods to properly join low voltage wires. Detailed steps covering necessary preparation and ensuring long-term connection integrity.



In European countries the standard 3-phase 4-wire distribution voltage level is 230/400 V. Many countries are currently converting their LV systems to the latest IEC standard of 230/400 V ...



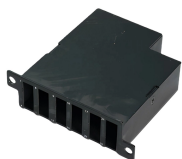
Unlock the full potential of low voltage boxes with CSQ Electric's comprehensive guide. From home theaters to security systems, explore how these essential components streamline installation, protect ...



Low-voltage wiring operates by wiring wires from a central media box to particular locations within the building, ensuring that the area is properly linked. This system enables a streamlined setup, with ...



Learn about low voltage junction boxes! Your guide covers installation, usage, and how to connect your system components safely using a box.



Whether you're planning a DIY upgrade or hiring professionals, this guide breaks down the key concepts, wiring types, installation tips, and safety codes you need to know for a successful ...

## Contact Us

For more information, pricing, or custom data center solutions, please contact us:

Website: <https://yoahorroenergia.es>

Email: [hello@yoahorroenergia.es](mailto:hello@yoahorroenergia.es)

Phone: +233 54 318 7269

Address: Plot 28, Spintex Road, Accra, Greater Accra, Ghana

This document is for informational purposes only. Specifications subject to change without notice.

