

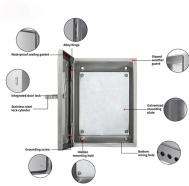
Core Switch Trunk Configuration



Core Switch Trunk Configuration



Ethernet trunk interfaces support different trunking modes. You can set an interface as trunking or nontrunking or to negotiate trunking with the neighboring interface. To autonegotiate ...



On your core switch, add each VLAN as Untagged to the port that your benchmark switch is connected. Then you can keep unmanaged switches on hand to plug into the bench switch if ...



A trunk port can have two or more VLANs configured on the interface; it can carry traffic for several VLANs simultaneously. The following figure shows how you can use trunk ports in the ...



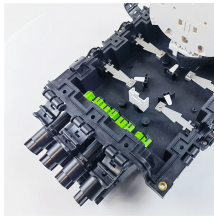
Trunks are used to carry VLANs. In this lesson you will learn how to configure Trunk on a Cisco Catalyst Switch.



The TRUNK function is used for cascade between core switches. By sacrificing the number of ports, it provides bundled high bandwidth for data exchange between switches, improving network speed and ...



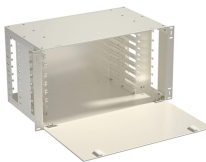
VTP allows network administrators to make VLAN configuration changes on a central switch (VTP server) and have those changes automatically propagated to all other switches in the ...



This blog will dive deep into the configuration of VLAN trunk ports, providing practical examples and a thorough understanding of their impact on network segmentation.



Looking at one of the core switches, I see that the access ports are a mix of forwarding and blocking. This tells me that the configuration is at least sort of working as intended.



Trunk - The command switchport mode trunk statically places the switch port as a trunk. This mode advertises DTP packets to the other end to establish a dynamic trunk.



This article describes how to configure access and trunk ports on a Cisco switch. How to verify the commands is also shown in the article.



Ethernet trunks carry the traffic of multiple VLANs over a single link, and you can extend the VLANs across an entire network. You can configure a trunk on a single Ethernet interface or on an ...

Contact Us

For more information, pricing, or custom data center solutions, please contact us:

Website: <https://yoahorroenergia.es>

Email: hello@yoahorroenergia.es

Phone: +233 54 318 7269

Address: Plot 28, Spintex Road, Accra, Greater Accra, Ghana

This document is for informational purposes only. Specifications subject to change without notice.

