

# Core Switches Using Stacking and VRRP



## Overview

In this session, Our focus will be to learn about the existing and new High Availability features present on the Catalyst 9k Switches. We have a pair of Cisco Cat 9500 - 16x with network essential license, we don't have a budget to upgrade the license to Network Advantage. However, I have a design dilemma right now. This is basically vrrp A Stacked CORE switch is a control plane single point of failure. The first step would be to un-stack them and as you suggested running VRRP/HSRP is probably. SW1 & SW2 are my switches (3750E) and form a stack (the drawn links are stack cables). SW3 & SW4 are independend customer switches (Avaya) and are physically connected with ethernet cables Chalange: I need to deliver a redundante connections to the LAN. All I can find are options to direct manage to each switch IP, FortiGate Fortilink (but still each switch) or FortiManager. What i'm looking for is a similar way Cisco do the stackwise virtual.

## Core Switches Using Stacking and VRRP



2 Core FortiSwitches independently managed by each switch IP (Core 1 and Core 2). Both switches routing using VRRP between themselves to host the L3 IPs (Core 1 and Core 2).



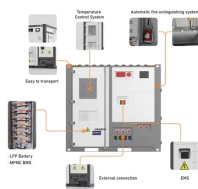
The core switches are also running VRRP to provide router redundancy for end devices such as the PCs and servers. The end devices are connected to the core switches through Layer 2 distribution switches.



In your case (in the same location), I think stacking is better, which provide a bit faster fail-over time than VRRP, also, it uses less IP addresses. Keep it simple and solve the problem.



SW3 & SW4 are independent customer switches (Avaya) and are physically connected with ethernet cables. Chalange: I need to deliver a redundante connections to the LAN. The ...



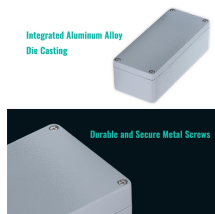
Learn what Cisco StackWise Virtual is, how it differs from StackWise-480, and how to deploy it across Catalyst 9000 switches.



I want to repurpose the 3750 as our distribution switch and data is in the Core. From my understanding, distribution switches will contain VLAN for end users, and core will be for Data.



It is intended for administrators responsible for installing, configuring, and managing Aruba switches on a network. Updates to this document can occur after initial publication. For the latest versions of ...



Stacking at the core (regardless of vendor) is universally a bad idea. If they're not wanting to buy all new expensive gear, you have two options, both with advantages and disadvantages. Split the stack into ...



In this session, Our focus will be to learn about the existing and new High Availability features present on the Catalyst 9k Switches. We will also categorize features based on access and Distribution layer in ...

## Contact Us

For more information, pricing, or custom data center solutions, please contact us:

Website: <https://yoahorroenergia.es>

Email: [hello@yoahorroenergia.es](mailto:hello@yoahorroenergia.es)

Phone: +233 54 318 7269

Address: Plot 28, Spintex Road, Accra, Greater Accra, Ghana

This document is for informational purposes only. Specifications subject to change without notice.

