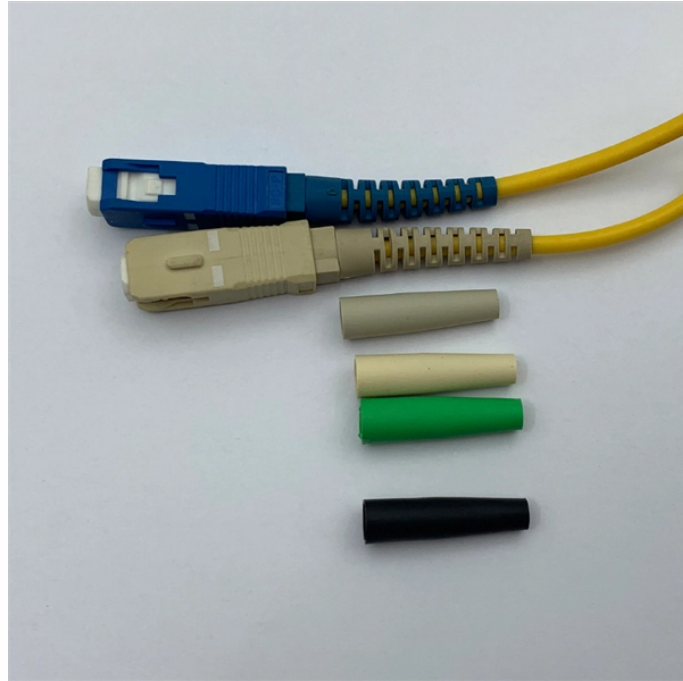


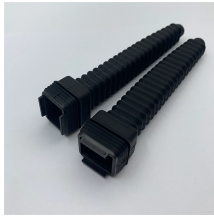
# Current of Dual Power Distribution Box



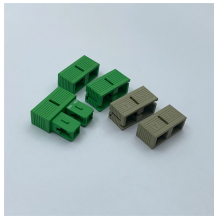
## Current of Dual Power Distribution Box



The dual power switching box functions with a set voltage, current, and response time. These parameters dictate its operational efficiency, reliability, ...



The outer door can be opened up to 110°, while the inner door can be opened up to 90°. The dual-door structure design segregates live parts from non-live parts to prevent electrical shock. All operations ...



[View and Download Black Box Dual-Circuit Power Distribution Unit specification sheet online.](#) Dual-Circuit Power Distribution Unit, 30-Amp. Dual-Circuit Power Distribution Unit power distribution unit ...



The increasing proliferation of smart devices and enhanced connectivity with power distribution equipment has expanded facility owner's options. These capabilities allow for automated ...



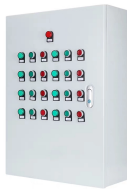
This comprehensive guide offers insights into the mechanisms and benefits of the ATS Dual Power Distribution Box, tailored to meet modern demands for sustainability and efficiency.



The dual power switching box functions with a set voltage, current, and response time. These parameters dictate its operational efficiency, reliability, and effectiveness for various applications.



These power distribution switches are available in 8-pin small-outline integrated circuit (SOIC) and 8-pin plastic dual-in-line packages (PDIP) and operate over an ambient temperature range of -40°C to 85°C.



Identify the dual power switch (if any): Understand the working principle and switching conditions of the dual power switch to ensure that it can automatically switch to the backup power ...



Currently, the market for dual power supply boxes is flourishing, driven by the increasing reliance on uninterrupted power supply in various sectors. Businesses are turning to overseas manufacturers, ...



Tripp Lite PDUs distribute power via multiple outlets to computers, servers and other rack-mounted network equipment.



Each bus can accommodate a supply voltage from 10- to 60-volts DC, either positive or negative polarity, with a peak input current of 100 amps to be distributed at 25 amps maximum on each of the ...



For power distribution inside a control panel, Class 9080 Power Distribution Blocks deliver reliable, flexible options—now UL Listed for easier code compliance. These NEMA blocks are ideal for ...



Browse power distribution boxes with circuit breaker protection and multiple outlet configurations. Shop durable solutions for construction and emergency use.

## Contact Us

For more information, pricing, or custom data center solutions, please contact us:

Website: <https://yoahorroenergia.es>

Email: [hello@yoahorroenergia.es](mailto:hello@yoahorroenergia.es)

Phone: +233 54 318 7269

Address: Plot 28, Spintex Road, Accra, Greater Accra, Ghana

This document is for informational purposes only. Specifications subject to change without notice.

