

Currently fiber optic sensors typically employ



Overview

The parts of fiber optic sensors mainly include an optical source like laser diode, laser and LED, optical fiber, sensing element like transducer, optical detector & electronic processing unit like wave analyzer, Optical spectrum analyzer & oscilloscope. A fiber optic sensor measures a physical quantity by modulating the intensity, spectrum, phase, or polarization of light traveling through the optical fiber system. It's a device that converts light rays into electronic signals. Think of it like a photoresistor, which changes its resistance based. Fiber optic current sensors are revolutionizing the way electrical currents are measured, providing high sensitivity, immunity to electromagnetic interference (EMI), and the ability to function in harsh environments.

Currently fiber optic sensors typically employ



Optical fibers can be used as sensors to measure strain, temperature, pressure and other quantities by modifying a fiber so that the quantity to be measured modulates the intensity, phase, polarization, wavelength or transit time of light in the fiber. Sensors that vary the intensity of light are the simplest, since only a simple source and detector are required. A particularly useful feature of intrinsic fiber-optic sensors is that they can, if required, provide distributed sensing over very large distances.



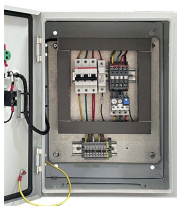
Fiber optic sensor technology uses light as an information carrier to measure physical variables. Optical signals are transmitted through a glass fiber.



This article explores the different types of Fiber Optic Sensors, their working principles, and various applications. We'll delve into Intrinsic, Extrinsic, and Hybrid fiber optic sensors, explaining how they ...



What is a Fiber Optic Sensor? A sensor that uses optical fiber as a detecting element is known as a fiber optic sensor. In remote sensing, fibers play a key role but based on the ...



Fiber optic sensors are deployed in remote or hazardous environments to track environmental parameters like temperature, seismic activity, and chemical presence.

An Extensive Library of Self-Developed Products



Fiber optic chemical sensors typically consist of two main components: a receptor and a transducer. The receptor converts the chemical information from the environment into a form of ...



Fiber optic current sensors work by detecting changes in light as it interacts with a magnetic field created by an electrical current. These sensors rely on the Faraday Effect, which ...



Fiber-optic sensors are optical sensors based on fiber devices. They are often used for sensing temperature and/or mechanical stress.



Fiber optics for sensing applications are used to communicate with a sensor device or use a fiber as the sensor itself to conduct continuous monitoring of physical, chemical, and biological changes in the ...



Fiber optic sensors are increasingly utilized in structural health monitoring in civil, aerospace, and energy applications. The recent surge in commercial demonstrations of these sensor systems both ...



Fiber-optic sensors are used in electrical switchgear to transmit light from an electrical arc flash to a digital protective relay to enable fast tripping of a breaker to reduce the energy in the arc blast.

Contact Us

For more information, pricing, or custom data center solutions, please contact us:

Website: <https://yoahorroenergia.es>

Email: hello@yoahorroenergia.es

Phone: +233 54 318 7269

Address: Plot 28, Spintex Road, Accra, Greater Accra, Ghana

This document is for informational purposes only. Specifications subject to change without notice.

