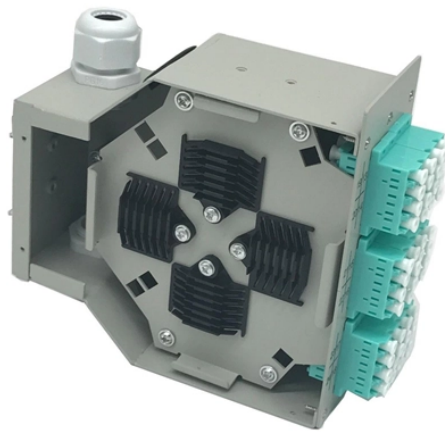


Distribution Box Wiring Principles



Overview

Practice good wiring: secure grounding, neat cable management, proper insulation, and correct wire gauge and breaker size. Include protection devices like breakers, fuses, and surge protectors—each circuit should have its own protection. Comply with standards: Follow NEC, IEC . By referring to the wiring diagram, electricians can identify which circuit breaker controls a specific area or appliance in the building, making it easier to isolate and fix any problems. When working with electrical panel boxes, it is crucial to follow safety protocols and ensure that the power. Ensure safe placement: install in dry, accessible areas with good ventilation and at appropriate height (typically ~1. more Learn how to wire a distribution box step by step! This video shows real on-site footage of. Electrical systems power our homes, offices, and industrial facilities, but behind every reliable electrical setup lies a crucial component that often goes unnoticed: the distribution box. Whether you're powering up a residential home, a commercial office, or an industrial plant.

Distribution Box Wiring Principles



Learn how to install a distribution box safely and correctly. Covers wiring, placement, standards, and expert tips for a compliant setup.



Understanding the key components of a distribution box helps you make informed decisions about installation and maintenance. Each element plays a specific role in ensuring safe ...



Correct wiring methods for circuit breakers within distribution boxes are fundamental to ensuring electrical safety and compliance with established codes. ...



The above mentioned electrical wiring accessories and protective devices are used to control and distribute electric supply (safely to connected electrical appliances) around your home. The following ...



Find out how to properly wire an electrical panel box with a comprehensive diagram and step-by-step instructions.



Learn how to connect a distribution box with this easy-to-follow, step-by-step guide. From tools and materials needed to common installation mistakes and solutions, this comprehensive article will ...



Functionality: The wiring diagram should clearly reflect the functional requirements of the Distribution box, including the correct connection of power switches, protective appliances, ...



Learn how to wire a distribution box step by step! This video shows real on-site footage of electrical installation, demonstrating safe and standardized wiring methods used by professionals.



According to electrical wiring requirements, the switchgear, measuring instruments, protective appliances, and auxiliary equipment are assembled in enclosed or semi enclosed metal ...



Correct wiring methods for circuit breakers within distribution boxes are fundamental to ensuring electrical safety and compliance with established codes. The distinction between 1P and 2P ...



Functionality: The wiring diagram should clearly reflect the functional requirements of the Distribution box, including the correct connection of power switches, protective appliances, ...



The above mentioned electrical wiring accessories and protective devices are used to control and distribute electric supply (safely to connected electrical appliances) ...



Learn everything about DB box (distribution box): what they are, how they work, wiring diagrams, types, and how to choose the right one.

Contact Us

For more information, pricing, or custom data center solutions, please contact us:

Website: <https://yoahorroenergia.es>

Email: hello@yoahorroenergia.es

Phone: +233 54 318 7269

Address: Plot 28, Spintex Road, Accra, Greater Accra, Ghana

This document is for informational purposes only. Specifications subject to change without notice.

