

Do fire-resistant cable trays for low-voltage wiring need to be bridging



Overview

Due to their exposure to the open air because of the cable trays, the wires contained within need a very durable outer covering. The regulations dictate that the cables must either be Type TC (also known as Tray Rated) or must be metal-armored (Type MC). The short answer is no. This is a description of how to select, install, and support these metal or plastic frames, on which electrical wires are installed. You should consider it as a series of instructions that make the buildings resistant to. This document outlines the key requirements for cable tray layout, installation, and fireproofing in industrial and commercial environments. Route Planning and Layout Principles Coordinate with Building Structure: Cable tray routing should align with architectural design, avoiding unnecessary. Cable tray systems provide a safe, organized, and flexible method for supporting insulated conductors and cables in commercial and industrial electrical installations. Cables are very rarely the source of a fire. The intent of this guide, along with NEC Article 330 and applicable federal, state, and municipal regulations, is to provide guidance for an optimized installation of fire resistive cabling systems. For suggested grips, supports and fasteners.

Do fire-resistant cable trays for low-voltage wiring need to be bridged



This article explains the main requirements and good practices for cable tray systems, including tray types, materials, loading, supports, bonding, cable selection, and installation details.



The short answer is no. Due to their exposure to the open air because of the cable trays, the wires contained within need a very durable outer covering. The regulations dictate that the cables ...



Cables should be segregated by voltage level (such as medium voltage and low voltage cables) and separated by function (e.g. power and instrument cables should be installed in separate trays).



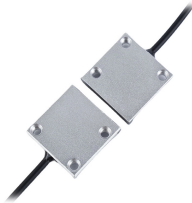
Where cables pass through shafts, walls, slabs, or enter electrical panels or cabinets, openings shall be tightly sealed with firestopping materials in accordance with design requirements.



Explore the importance of fire-resistant cable trays in high-risk environments. Learn about the best materials and practices to ensure maximum safety and performance in fire-sensitive areas.



Cables and conductors must be secured to the cable tray at intervals according to installation instructions. For non-horizontal runs, cables should be fastened securely to transverse ...



Cables are very rarely the source of a fire. This would only occur if the cable was overloaded to a point at which its insulation melts and inflames materials in the vicinity, or if it short ...



Where cables pass through shafts, walls, slabs, or enter electrical panels or cabinets, openings shall be tightly sealed with firestopping materials in ...



Explore the importance of fire-resistant cable trays in high-risk environments. Learn about the best materials and practices to ...



Segregation of Power and Signal Cables: Power (high-voltage) and signal (low-voltage) cables should be routed separately, using dedicated trays to minimize ...



A cable tray is to be provided to secure the safety of a building, and in this scenario, it must fulfil the requirement of an observable highway where stray electricity may pass till it contacts ...



Segregation of Power and Signal Cables: Power (high-voltage) and signal (low-voltage) cables should be routed separately, using dedicated trays to minimize electromagnetic interference.

Contact Us

For more information, pricing, or custom data center solutions, please contact us:

Website: <https://yoahorroenergia.es>

Email: hello@yoahorroenergia.es

Phone: +233 54 318 7269

Address: Plot 28, Spintex Road, Accra, Greater Accra, Ghana

This document is for informational purposes only. Specifications subject to change without notice.

