

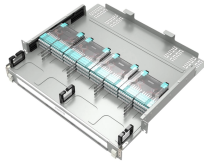
# Do string photovoltaic modules have combiner boxes and how are they connected



## Overview

Each string consists of modules connected in series, producing DC power under solar irradiation. In photovoltaic solar installations —particularly those with multiple strings of panels— the string combiner box is a crucial component that ensures the safety, efficiency, and monitoring of the system. Often overlooked during the early design phases, this panel plays a vital role in managing. A solar combiner box is a crucial component in solar energy systems, designed to consolidate the outputs of multiple solar panel strings into a single output that connects to an inverter. It simplifies the wiring going to the inverter, which can reduce material and labor costs. As system scale increases, more strings need to be managed within a structured electrical layout.

## Do string photovoltaic modules have combiner boxes and how are t



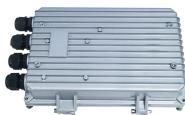
Each string consists of solar modules wired in series, and the combiner box gathers multiple strings into a single output while ensuring safety and system efficiency.



String combiner boxes are key components in solar PV installations that gather the output from multiple solar panel strings and consolidate them into a single DC output for the inverter ...



A PV combiner box becomes essential when your system has 3 or more PV strings connected in parallel to the same inverter MPPT input. This rule is grounded in electrical safety ...



A combiner box (also called a PV combiner or DC combiner) is an electrical enclosure mounted between the solar array and the inverter. It receives the positive and negative conductor pairs from each string ...



A video that shows how string combiner boxes are the best plug& play solution for photovoltaic systems, ensuring top protection through high quality components, maximum flexibility thanks to a wide range ...



Also known as a string control panel, a string combiner box is a device that connects, protects, and monitors several strings of solar panels operating in direct current, before the energy is ...



Combiner boxes become necessary when your photovoltaic system includes more than three strings connecting to the inverter. Systems with three or fewer strings can typically connect ...



A PV combiner box connects photovoltaic strings and the inverter. It collects DC current from multiple strings and delivers it through a single output path, forming a structured connection between ...



Each string consists of solar modules wired in series, and the combiner box gathers multiple strings into a single output while ensuring safety ...



Think of a combiner box as a junction point for your solar panels. It streamlines the wiring from multiple solar panel strings into a single, more manageable circuit before it heads to the inverter.



The design and configuration of solar combiner boxes are crucial for ensuring the efficiency, safety, and reliability of solar power systems. These boxes serve as a central hub for ...

## Contact Us

For more information, pricing, or custom data center solutions, please contact us:

Website: <https://yoahorroenergia.es>

Email: [hello@yoahorroenergia.es](mailto:hello@yoahorroenergia.es)

Phone: +233 54 318 7269

Address: Plot 28, Spintex Road, Accra, Greater Accra, Ghana

This document is for informational purposes only. Specifications subject to change without notice.

