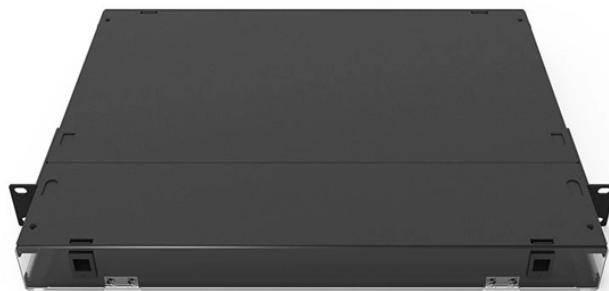


# Does a beam splitter need an optical module



## Overview

Generally, cube beam splitters cannot tolerate a high optical powers as plate beam splitters, although optically contacted cubes can also exhibit substantial power handling capabilities. Conversely, it can also combine multiple signals into one. It is a crucial part of many optical experimental and measurement systems, such as interferometers, also finding widespread application in fibre optic telecommunications. Beamsplitters are often classified according to their construction: cube or plate. These unassuming devices enable a single optical signal to be divided into multiple paths, making them indispensable for sharing network resources efficiently—from residential FTTH (Fiber-to-the-Home) connections to large-scale telecom backbones. Optical splitter. CommScope offers a portfolio of bare and connectorized splitters/couplers in a wide range of styles and split ratios, and splitter modules for inside plant (ISP) and outside plant (OSP) applications that help you optimize your fiber access network architecture. CommScope's optical splitter products.

## Does a beam splitter need an optical module



Optical splitters enable a signal on an optical fiber to be distributed among two or more fibers. Since fiber splitters contain no electronics nor require power, they are an integral component ...



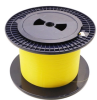
Learn how fiber optic splitters work, types (PLC, FBT), and uses in FTTH/data centers. Understand signal splitting, key specs, and how to choose the right splitter.



A beam splitter (or beamsplitter, power splitter) is an optical device which can split an incident light beam (e.g. a laser beam) into two (or sometimes more) beams, which may or may not have the same ...



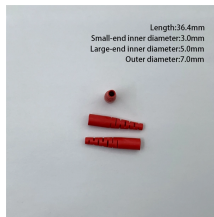
Optical beam splitters are important components across multiple optical systems since they serve applications throughout telecommunications and scientific research. These devices split ...



A beam splitter or beamsplitter is an optical device that splits a beam of light into a transmitted and a reflected beam. It is a crucial part of many optical experimental and measurement systems, such as ...



Beamsplitters are optical components used to split incident light at a designated ratio into two separate beams. Additionally, beamsplitters can be used in reverse to combine two different beams into a ...



An optical splitter is a passive device, but it doesn't work alone. It relies on active equipment at both ends of the fiber link: the Optical Line Terminal (OLT) at the provider's central ...



Beamsplitters are optical components used to split an incoming light beam into two independent beams. Depending on the application, they can also combine two beams into a single beam.



Also known as optical splitters, fiber splitters, or beam splitters, these integrated waveguide optical power distribution devices play a pivotal role in passive optical networks like ...



CommScope's Optical Splitter Modules are part of our value-added module (VAM) system that provides flexibility, scalability and functionality to an optical transport system.



An optical splitter is a passive device, but it doesn't work alone. It relies on active equipment at both ends of the fiber link: the Optical Line Terminal ...



Overview  
Designs  
Phase shift  
Classical lossless beam splitter  
Use in experiments  
Quantum mechanical description  
Reflection beam splitters

## Contact Us

For more information, pricing, or custom data center solutions, please contact us:

Website: <https://yoahorroenergia.es>

Email: [hello@yoahorroenergia.es](mailto:hello@yoahorroenergia.es)

Phone: +233 54 318 7269

Address: Plot 28, Spintex Road, Accra, Greater Accra, Ghana

This document is for informational purposes only. Specifications subject to change without notice.

