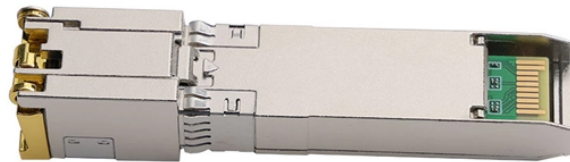


# Does the core switch have 10 Gigabit Ethernet



## Overview

The Edgecore ECS5500-12T/12P is a high performance 100M/ 1G/2.5G/5G/10G Gigabit (Multi-Gig) Ethernet Layer 2+ managed switch with 240 Gbps switching capacity. Based on the proven Cisco ® Catalyst 4500 Series hardware and software architecture, the Cisco Catalyst 4948 10 Gigabit. All overSwitch S48-ON Spec Sheet ell nc. The S3248T-ON offers power-efficient and resilient 1GbE switching solution for advanced Layer 3 distribution with integrated 10GbE SFP+ and 100GbE QSFP28 ports. The switch is ideal for SMB networks as a core switch. 8-port 10GbE Copper switch pricing starting from \$800 (varies based on region). To date, 10GbE connectivity has often involved costly fiber. The IGS-1000-8T4X features 8 10/100/1000BASE-T ports and 4 1G/2.5G/10GBASE-X SFP+ fiber optic uplink ports that provide long-distance, high-speed and stable data transmission to a remote core network. Power Requirement: 9-48V DC, 4A max.

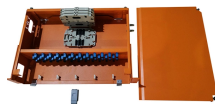
## Does the core switch have 10 Gigabit Ethernet



Ethernet Direct offers industrial 10Gb core Ethernet switches equipped with 24 Gigabit Ethernet ports, up to 4 10 Gigabit Ethernet (10GbE) ports, Layer 2. Layer 2 Plus, Advanced Layer 2 switching features.



- 1U switch with 48 line-rate RJ45 1GbE ports, and four integrated 10GbE SFP+ ports.
- Two 100GbE QSFP28 uplink ports.
- Add a second 80PLUS Platinum certified hot swappable internal power ...



The Cisco Catalyst ® 4948 10 Gigabit Ethernet Switch is a wire-speed, low-latency, Layer 2 to 4, 1-rack-unit (1RU), fixed-configuration switch for rack-optimized server switching.



With 8 multi-speed RJ45 Ethernet ports (supporting 10G/5G/2.5G/1G/100M), this switch offers seamless connectivity for high-bandwidth tasks such as 8K video streaming, NAS operations, ...



Featuring Plug and Play and 10G SFP+ uplink ports, PLANET IGS-1000-8T4X Industrial-grade, DIN-rail type Unmanaged Gigabit Ethernet Switch is perfect for heavy industrial environments.



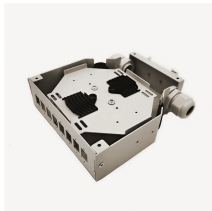
Add 10-Gigabit Ethernet connectivity to your network with these cost-effective switches. Designed to work as the network core for Small to Medium Businesses (SMBs) or as an aggregation switch in a ...



The Cisco Meraki MS350 series provides 10G SFP+ uplinks and high-performance access switching for large enterprise and campus networks. The switch includes optional PoE/PoE+ support, highly ...



A compact 1U 400G switch built for AI clusters, storage fabrics, and high-speed aggregation, featuring four 400G QSFP56-DD ports, dual 10 Gigabit Ethernet, and RouterOS v7.



On top of the plug-n-play 10-Gigabit Ethernet connectivity, it also offers fundamental network features that will help optimize the performance of business networks such as VLAN, QoS, IGMP Snooping, ...



The Edgecore ECS5500-12T/12P switch is a 10G Ethernet access switch with 8 x 10GBASE-T ports and 2 x 10G SFP+/2 x 10GBASE-T as uplink ports. The switch is ideal for SMB networks as a core switch.

## Contact Us

For more information, pricing, or custom data center solutions, please contact us:

Website: <https://yoahorroenergia.es>

Email: [hello@yoahorroenergia.es](mailto:hello@yoahorroenergia.es)

Phone: +233 54 318 7269

Address: Plot 28, Spintex Road, Accra, Greater Accra, Ghana

This document is for informational purposes only. Specifications subject to change without notice.

