

# Does the optical module belong to the AI server



## Overview

Optical modules are often necessary in AI server rooms, especially when high-speed data transmission and large-scale computing are required. Optical modules. While the industry-standard OSFP (Octal Small Form-Factor Pluggable) module has successfully enabled 400Gbps, 800Gbps, and 1. Since the rapid growth of ChatGPT by January 2023, the software application developed by OpenAI has won unprecedented attention and favor from users worldwide. These modules include a powerful digital chip that performs complex signal conditioning, Forward Error Correction (FEC), equalization, and clock recovery. Optical modules are used for data transfer between network devices to ensure that data can be transmitted efficiently and reliably both inside and outside the. What do Cisco optics offer where many vendors fall short?

The rapid growth of Artificial Intelligence (AI) and Machine Learning (ML) workloads demands highly efficient and scalable network infrastructures to support massive data transfer and low-latency communication across Graphics Processing Unit.

## Does the optical module belong to the AI server



In AI training and inference environments, optical modules play a crucial role in connecting large-scale GPU clusters, with performance requirements far exceeding those of ...



Optical modules are critical components in AI intelligent devices for achieving high-speed data transmission, with stringent requirements for the frequency, accuracy, phase noise, jitter, and ...



In this post, I'll explain the importance of optical connectivity, particularly the role of DSP-based optical connectivity, in driving scalable AI ...



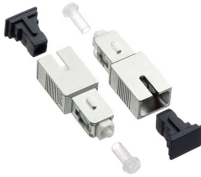
Optical modules reduce power consumption and improve system stability, allowing AI systems to run longer with fewer interruptions. These modules play a key role in data centers, AI ...



Linear-drive Pluggable Optics (LPO) is a new class of optical transceiver designed to dramatically reduce power and latency. Unlike DSP optics, LPO modules eliminate digital signal ...



The role of optical modules cannot be ignored in the construction of AI server rooms. They can not only provide high-speed and stable data transmission, but also meet the demand for ...



In this post, I'll explain the importance of optical connectivity, particularly the role of DSP-based optical connectivity, in driving scalable AI platforms in the cloud.



When AI models scale to a million or more processors, they will require gigawatts of power and have to span more than one physical data center, says ...



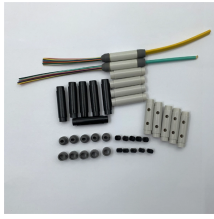
When AI models scale to a million or more processors, they will require gigawatts of power and have to span more than one physical data center, says Velaga. The opportunity for optical ...



The market has seen that AI systems urgently need optical transceivers to provide ultra-faster and higher-bandwidth data transmission between computing servers than ever before.



In large-scale AI fabrics comprising tens of thousands of optical links, component failures become statistically inevitable. However, the hard and soft failure rates of today's optical modules remain ...



High-quality optics play a critical role in achieving the required performance by enabling high-bandwidth, low-latency connectivity and minimizing data loss across large-scale AI networks.

## Contact Us

For more information, pricing, or custom data center solutions, please contact us:

Website: <https://yoahorroenergia.es>

Email: [hello@yoahorroenergia.es](mailto:hello@yoahorroenergia.es)

Phone: +233 54 318 7269

Address: Plot 28, Spintex Road, Accra, Greater Accra, Ghana

This document is for informational purposes only. Specifications subject to change without notice.

