

Does the router interface need an optical module



Overview

Routers and switches need to use optical modules and fiber patch cord to realize the interconnection between network devices. Think of it as the “translator” for your network equipment, converting electrical signals into optical signals. An SFP (Small Form-factor Pluggable) is a compact, hot-pluggable transceiver module that allows networking equipment — including switches, routers, servers, and media converters — to support different physical media, such as optical fiber or copper, without replacing the host hardware. This modular. This article helps network engineers and field technicians select the right SFP transceivers for router WAN interfaces, with operational checks they can run before a cutover. You will get a distance-first selection method, a compatibility checklist for common vendor quirks, and troubleshooting. The SFP+ port is a high-speed optical-to-optical signal conversion port, mainly used for 10G Ethernet and Fiber Channel network applications. A key advantage of SFP+ Modules is that they are “hot-swappable”, meaning they can be swapped out while the router is still powered on.

Does the router interface need an optical module



Learn how to select SFP optics for a router fiber interface at the enterprise edge: specs, reach math, compatibility checks, pitfalls, and ROI.



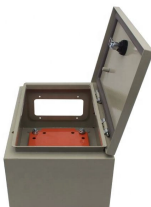
An SFP (Small Form-factor Pluggable) is a compact, hot-pluggable transceiver module that allows networking equipment — including switches, routers, servers, and media converters — to ...



DOES definition: a plural of doe. See examples of does used in a sentence.



Explore the ultimate guide to optical modules. Learn types, functions, performance metrics & how to choose the right module for your fiber network.



The SFP+ port needs to be used in conjunction with an SFP+ optical module or SFP+ electrical port module to establish a connection and data transmission between devices.



Both do and does are present tense forms of the verb do. Which is the correct form to use depends on the subject of your sentence. In this article, we'll explain the difference between do ...



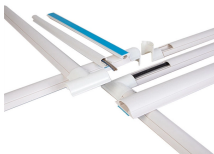
Discover everything you need to know about SFP modules, including types, how they work, and how to choose the right one for your network. Learn how SFP modules power modern ...



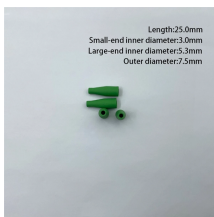
The QDD optical line system simplifies this model by combining amplification functionality into a QSFP-DD pluggable module, installed directly in compatible router or switch ports, with ...



Stop guessing between do vs. does! Learn the easy rules for questions, negatives, and emphasis with our 10-second subject-verb chart.



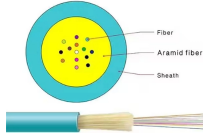
DOES meaning: 1. he/she/it form of do 2. he/she/it form of do 3. present simple of do, used with he/she/it. Learn more.



Learn how to select the right optical transceiver for your switch or router. Compare SFP, SFP+, QSFP28, Cisco SFPs, and Huawei modules with buying tips.



Definition of does verb in Oxford Advanced Learner's Dictionary. Meaning, pronunciation, picture, example sentences, grammar, usage notes, synonyms and more.



Examples of "does" in a sentence does These examples have been automatically selected and may contain sensitive content that does not reflect the opinions or policies of Collins, or its parent ...



What Is an SFP Module and What Role Does It Play in Network Infrastructure? SFP module, short for small form factor pluggable, is a standardized interface module used in switches, ...



Learn how to use do and does with simple rules, clear examples, and real sentence practice for questions and negatives.



Discover when to use do and does in English grammar. Learn the rules for questions and negatives, see clear examples, and practice with easy exercises to master correct usage.



The meaning of DOES is present tense third-person singular of do; plural of doe.



We've put together a guide to help you use do, does, and did as action and auxiliary verbs in the simple past and present tenses.



SFP (Small Form-factor Pluggable) is a compact, hot-pluggable network interface module used to connect network devices (switches, routers, firewalls) to fiber optic or copper cables.



Routers and switches need to use optical modules and fiber patch cord to realize the interconnection between network devices. Usually, Gigabit switch can be matched with gigabit ...

Contact Us

For more information, pricing, or custom data center solutions, please contact us:

Website: <https://yoahorroenergia.es>

Email: hello@yoahorroenergia.es

Phone: +233 54 318 7269

Address: Plot 28, Spintex Road, Accra, Greater Accra, Ghana

This document is for informational purposes only. Specifications subject to change without notice.

