

## Ears fixed in the distribution box



### Overview

TL;DR: The mounting ears on an electrical outlet yoke are the small metal tabs that allow the receptacle to be fastened to the electrical box or, in certain installations, to sit flush against the wall surface. Crafted from durable ABS plastic, this black enclosure measures 4.17 inches, providing ample space for your electrical projects. With an IP65 rating, it's protected against dust, corrosion, and splashing water. This ABS project box brings a better customizable experience. Easy to drill and shape openings for many items like meters, sockets, LEDs and so on. Many screw holes inside in various places. Some, like those you find on Eaton components, even have an integrated wire stripper. They may be used as a junction box or a device box for switches, receptacles, GFCIs, etc.

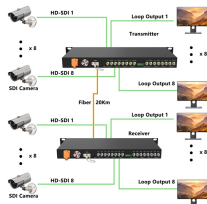
## Ears fixed in the distribution box



Description: This ABS project box brings a better customizable experience. 1.Made of ABS material. Sturdy and terrific for making those DIY projects. Easy to drill and shape openings for many items ...



Sonic Electric offers top-quality electrical and lighting products for all your needs. Shop the Orbit EOWB Ear for Old Work Boxes.



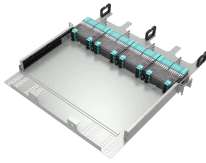
Safety in Use: This electrical box mounting straps prioritize safety during use. With its sturdy construction, the electrical box repair tightens loose outlet boxes, keeps junction boxes flush ...



Protect your electrical connections with this robust IP65 waterproof junction box. Crafted from durable ABS plastic, this black enclosure measures 4.53 x 3.54 x 2.17 inches, providing ample space for your ...



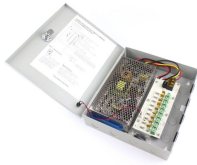
Knowing when to use and when to remove the little ears on an outlet or switch is a tiny bit of knowledge that can ensure a professional finish on your DIY electrical projects around the house. ...



They may be used as a junction box or a device box for switches, receptacles, GFCIs, etc. Manufactured of durable materials with consistent construction means easy installation, making all the difference in ...



It's crafted from high - quality ABS material, offering excellent impact resistance and electrical insulation. With an IP65 rating, it's ...



The RACO Nongalvanized Steel Open Electrical Switch Box Plaster Ears features an open style. You can use it to convert a switch box into an old work type.



They may be used as a junction box or a device box for switches, receptacles, GFCIs, etc. Manufactured of durable materials with consistent construction ...



It's crafted from high - quality ABS material, offering excellent impact resistance and electrical insulation. With an IP65 rating, it's protected against dust, corrosion, and splashing water, suitable for both ...



Key takeaways Mounting ears are the protruding metal tabs on an outlet's yoke that fasten the receptacle securely to the electrical box using 6-32 screws. They provide mechanical ...



Electrical outlets have four "ears" on the top and bottom that can be used to tilt the outlet forward, left or to the right.

## Contact Us

For more information, pricing, or custom data center solutions, please contact us:

Website: <https://yoahorroenergia.es>

Email: [hello@yoahorroenergia.es](mailto:hello@yoahorroenergia.es)

Phone: +233 54 318 7269

Address: Plot 28, Spintex Road, Accra, Greater Accra, Ghana

This document is for informational purposes only. Specifications subject to change without notice.

