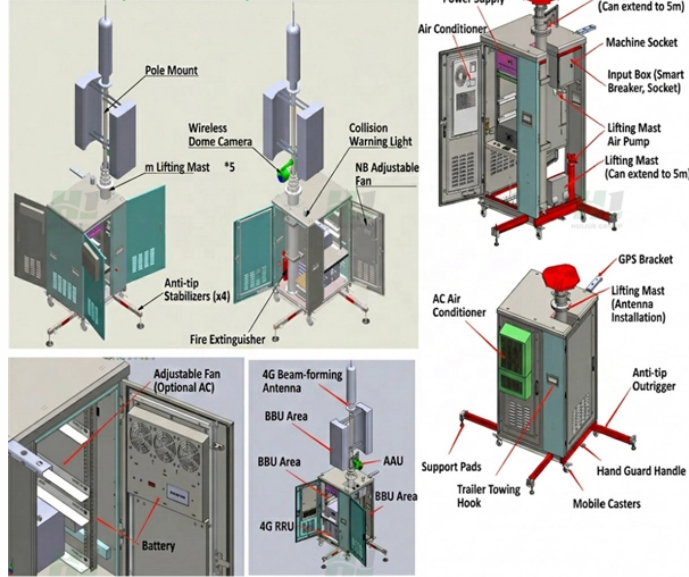


Emergency Lighting Distribution Box Principle

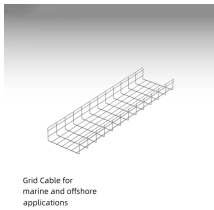
Product Composition Description



Emergency Lighting Distribution Box Principle



What constitutes an effective system is clearly defined by the National Fire Protection Association in the NFPA 101: Life Safety Code. This guide will help to ensure you meet those requirements. A reliable ...



Learn about different power sources and controls for emergency lighting, including unit equipment, central inverters and generators, as well as their respective advantages, installation ...



NEC Article 700 requires emergency systems to be designed to automatically supply power for exit lighting, fire detection and alarm systems, elevators, fire pumps, and public safety communications ...



The emergency lighting controller should be able to control and display the working status of all emergency lights, fire emergency power supplies, emergency lighting distribution devices and ...



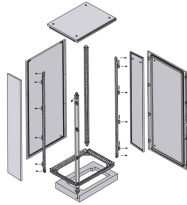
We'll then present a detailed review of how you can provide emergency lighting when you have centralized emergency power sources such as generators or central battery inverters.



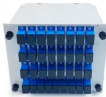
When the building is a Class A high-rise building, the two power supplies are the main power supply and the emergency power supply. When it is a class II high ...



The production points of emergency lighting distribution box are as follows: 1. The energy distribution system in the construction site realizes the hierarchical distribution of energy. The main distribution ...



Emergency lighting makes it possible to safely stop working and to evacuate the building, by following the exit lights, in case of an emergency. Emergency lighting is a standalone backup system, which ...



An external UI 924 load control relay may be used to bypass a switch or dimmer to energize emergency lights, but never may be used to transfer emergency lights between a normal and an emergency ...



When the building is a Class A high-rise building, the two power supplies are the main power supply and the emergency power supply. When it is a class II high-rise building, it is appropriate to supply power ...



Within these documents, specific locations for emergency lighting, minimum lighting levels, installation and testing requirements, and product quality are all determined. These regulations and standards ...



This provides information for areas requiring emergency lighting but also best practice for the lighting of a selection of high risk tasks. It also clarifies that emergency lighting is needed for all parts of schools ...

Contact Us

For more information, pricing, or custom data center solutions, please contact us:

Website: <https://yoahorroenergia.es>

Email: hello@yoahorroenergia.es

Phone: +233 54 318 7269

Address: Plot 28, Spintex Road, Accra, Greater Accra, Ghana

This document is for informational purposes only. Specifications subject to change without notice.

