

Energy-Saving Selection Guide for Backbone Network-Grade PoE Switches

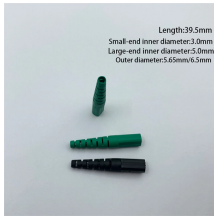


Overview

This article outlines the different PoE standards, explains the key criteria for proper selection, and provides guidance to avoid issues such as insufficient power delivery or compatibility failures. Three Generations of PoE Technology: The Evolution of PowerA managed PoE++ switch allows you to remotely reboot frozen devices, monitor real-time power consumption, and schedule on/off cycles for entire departments—all from a single interface. This centralized control not only reduces truck rolls for IT staff but also enables proactive energy-saving. Consistent with FAR 12. 212, Commercial Computer Software, Computer Software Documentation, and Technical Data for Commercial Items are licensed to the U. Government under vendor's standard commercial license. Links to third-party websites take you outside the Hewlett Packard Enterprise. But here's the problem your current PoE switch is maxed out, and you're facing an expensive, disruptive upgrade far sooner than anticipated. This scenario plays out in organizations every day, and it's entirely preventable. Whether. Setting up a network with Power over Ethernet

(PoE) devices can be a headache. I've spent countless hours running power cables to IP cameras, wrestling with power strips near wireless access points, and dealing with the cable clutter that comes with traditional network setups. Frequently Asked Questions (Q&A) V. 3bt and can provide 90W PoE output. High-power PDs are now supported by our red port PoE.

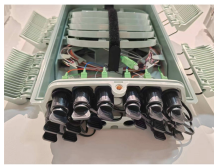
Energy-Saving Selection Guide for Backbone Network-Grade PoE Sw



TP-Link Green Technology is designed to save power consumption by adjusting power consumption according to the application of devices, including powering down idle ports and power budgeting ...



Our PoE++ (802.3bt) guide shows how to power high-demand devices, reduce installation costs by up to 50%, and future-proof your network. Get your free ROI calculator.



By harnessing green energy sources like solar, wind, and hydroelectric power, and utilizing Benchu group's exclusive intelligent PoE technology, this solution ensures stable networking ...



Expert reviews of the top PoE switches for every budget and use case. We tested 12 models for performance, power budget, and reliability to help you choose the perfect switch.



This article will explore the different types of PoE switches and their applications, providing a practical buying guide to help users select the best solution for their network needs.



With an industrial-grade design, our PoE switches provide surge protection of 4 kV per LAN port. Additionally, Smart PoE management features simplify PoE network deployment and maintenance.



Our PoE++ (802.3bt) guide shows how to power high-demand devices, reduce installation costs by up to 50%, and future-proof your network. ...



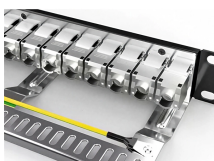
This comprehensive guide demystifies the PoE switch selection process, empowering you with the knowledge to make informed decisions that maximize scalability while optimizing performance and ...



This article is to introduce how to choose the right PoE, PoE+, and PoE++ switches step by step, along with some common Q& A.



To locate the PoE information for your specific AOS-CX switch, see the Table of Contents at the front of this guide, or the Quick reference table. To find related publications, visit the HPE Networking ...



Dahua PoE switch supports 8-pin power supply and offers backward compatibility with 4-pin, which can help reduce cable loss during the transmission, especially in long distance PoE transmission.

Contact Us

For more information, pricing, or custom data center solutions, please contact us:

Website: <https://yoahorroenergia.es>

Email: hello@yoahorroenergia.es

Phone: +233 54 318 7269

Address: Plot 28, Spintex Road, Accra, Greater Accra, Ghana

This document is for informational purposes only. Specifications subject to change without notice.

