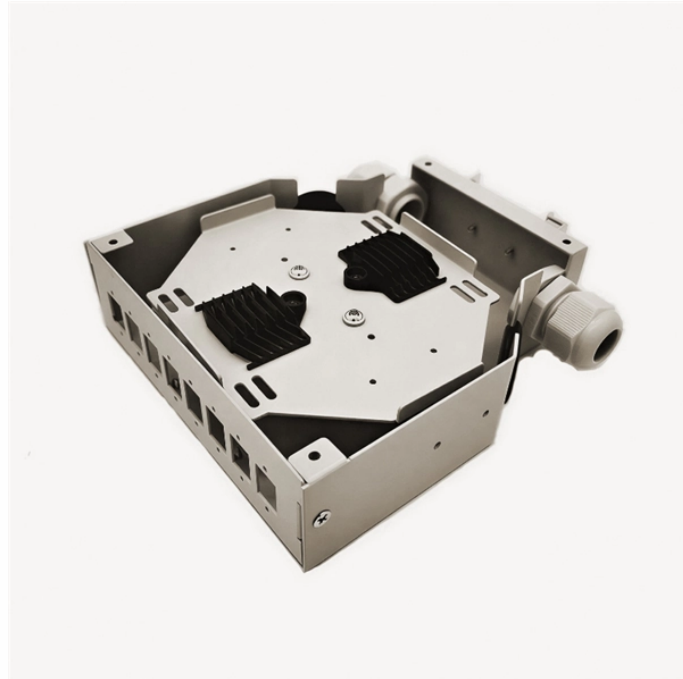


## Equipment cable trays in the processing room



## Equipment cable trays in the processing room



This article explains the main requirements and good practices for cable tray systems, including tray types, materials, loading, supports, bonding, cable selection, and installation details.



Cable tray length is selected based on the load to be supported, the distance between the supports (also referred to as the span), and handling and installation constraints.



The NEXTFRAME® Ladder Tray is available in popular gray and black finishes to complement equipment in any data center. The complete NEXTFRAME® Ladder Tray system features a broad ...



When fitting cable trays and their accessories, the products are cut on site to create changes of direction, adjust sections, etc. Damage can also occur during handling; as a result, both the ...



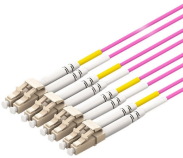
Step-by-step instrumentation cable tray installation guide with safety tips, standards, inspections, and downloadable Excel checklist.



Step-by-step cable tray and conduit installation method with safety, quality and inspection procedures as per IEEE standards.



This document lists the most typical mistakes that EPC teams should not make while installing instrumentation cable trays to make sure the plant runs ...



Explore the ultimate guide to cable tray production equipment. Learn about types, features, and trends to improve efficiency, precision, and sustainability in manufacturing.



Cable tray may be used as the Equipment Grounding Conductor (EGC) in any installation where qualified persons will service the installed cable tray system. There is no restriction as to where the ...



Snap Track® ventilated channel cable tray replaces rigid conduit for the "last mile" cable runs in manufacturing and processing environments — routing instrument, control, and low-voltage power ...



In industrial settings, electrical and instrumentation (E& I) cable trays or bridge racks play a critical role in organizing and supporting power, control, and signal cables across facilities.

## Contact Us

For more information, pricing, or custom data center solutions, please contact us:

Website: <https://yoahorroenergia.es>

Email: [hello@yoahorroenergia.es](mailto:hello@yoahorroenergia.es)

Phone: +233 54 318 7269

Address: Plot 28, Spintex Road, Accra, Greater Accra, Ghana

This document is for informational purposes only. Specifications subject to change without notice.

