

## **Extend the main line of the distribution box**



### **Overview**

Every electrical box has a maximum volume, measured in cubic inches, and the number of conductors, splices, switches, and grounding wires inside must not exceed this limit. Exceeding the box fill volume can lead to overcrowding, which traps heat and increases the risk of a. Due to design of new panel the neutral feeder wire is short. Was not able to pull it out to replace the feeder wire. What splicer or split bolts can be used so that I am following code?

Per NEC 2020, 230. I'll walk you through the task with clear, actionable steps for a successful project. Extending residential electrical wire is a common need when modifying a space, adding an outlet, or relocating a light fixture. While the physical act of adding length to a conductor is straightforward, the process is highly regulated to prevent fire hazards and ensure system integrity. This work. My main question is, how do I properly extend the conductors from the main so they reach the sub?

My initial thought was to mount some junction boxes against the center stud, on the main panel side, just above it. Kelly says outside court Pilot Risks

Everything on the World's Shortest Runway All My Favorite Tools: <https://www.WAGO.com> 221-413 or the 221-2401 make quick work of extending short wires to reach a new b.

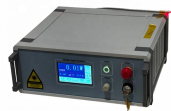
## Extend the main line of the distribution box



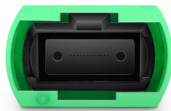
Just remove the service wires from the main breaker lugs and use insulated mechanical lugs (ILSCO) to add on wire to the new adjacent disconnect.



Extend electrical wire safely and legally. We explain approved splicing methods, essential component matching, and critical NEC rules for accessible enclosures.



Extending electrical wiring? Learn safe, step-by-step methods, essential tools, and code tips to avoid mistakes and ensure a secure, professional-quality result.



A feeder is a conductor that originates at the main distribution or main disconnect device and terminates at another distribution center, panelboard, or load center.



How to extend existing electrical wiring" - our comprehensive DIY guide covers everything you need to know. Learn how to safely extend.



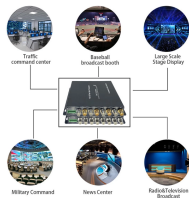
WAGO 221-413 3-Wire Lever Nut Conductor Compact Splicing Connectors, 12-24 AWG (50-Box)



There's a project coming up that will require two (200 amp) single phase 240v panels (in a shop) to have their main disconnect locations changed. A new utility side will be ran on the line ...



My main question is, how do I properly extend the conductors from the main so they reach the sub? My initial thought was to mount some junction boxes against the center stud, on the ...



Effective January 1, 2023, pressure connectors and devices for splices and taps installed on service conductors shall be marked "suitable for use on the line side of the service equipment" or ...



When you are sure about the primary service line running to the electrical panel, it is time to start re-wiring the breakers. You are going to do this by extending the wires and getting them to the ...

## Contact Us

For more information, pricing, or custom data center solutions, please contact us:

Website: <https://yoahorroenergia.es>

Email: [hello@yoahorroenergia.es](mailto:hello@yoahorroenergia.es)

Phone: +233 54 318 7269

Address: Plot 28, Spintex Road, Accra, Greater Accra, Ghana

This document is for informational purposes only. Specifications subject to change without notice.

