

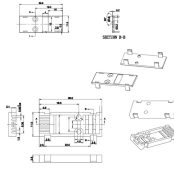
# Fault Diagnosis in Relay Protection Systems



## Overview

Relay fault diagnosis refers to the process of identifying and analyzing faults or abnormalities in protective relays. To promptly detect the faults of the relay protection system and the circuit breakers in time and to ensure the operational reliability of these protective devices, this paper proposes a fault tracing method for a relay protection system–circuit breaker based on improved Random Forest. Firstly, an. Abstract: A method of fault tracking for relay protection devices is presented in this paper. In order to ensure the. Based on CNKI China journal full text database, this paper sets "fault diagnosis of secondary circuit in Smart Substation" as the theme and "core journal" as the scope, carries out fuzzy matching search, collects 25 relevant documents in recent years, and writes a review report.

## Fault Diagnosis in Relay Protection Systems



To promptly detect the faults of the relay protection system and the circuit breakers in time and to ensure the operational reliability of these protective devices, this paper proposes a fault ...



Aiming at the problems existing in the fault diagnosis of power equipment by the traditional methods, this paper proposes a fault diagnosis method for the secondary circuit of substation relay ...



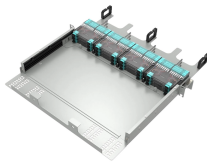
This project aims to combine artificial intelligence theories and methods such as deep learning, machine learning, and data mining to study a new type of fault diagnosis and relay ...



The article suggests a prediction and fault diagnosis model for relay protection system condition assessment that is based on the IAHP, SVM, IPSO, ...



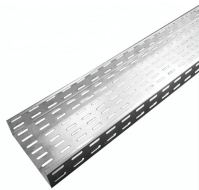
This study provides an innovative solution for fault diagnosis of smart substation relay protection systems by combining Transformer architecture and transfer learning.



This paper summarizes on-line monitoring technology and fault diagnosis technology, and briefly discusses its development significance.



To promptly detect the faults of the relay protection system and the circuit breakers in time and to ensure the operational reliability of these protective devices, this paper proposes a...



When dealing with failure of relay protection devices, the internal faults of the protection device are causes, and the failure symptoms are results. Fault tracking in this paper refers to the process of ...



The article suggests a prediction and fault diagnosis model for relay protection system condition assessment that is based on the IAHP, SVM, IPSO, and K-means clustering algorithm.



An improper functioning of systems related to stability of power systems and protective relays through circuit breakers remains a factor that jeopardizes the st



Relay fault diagnosis techniques and troubleshooting play a vital role in ensuring the reliability and safety of electrical power systems. By promptly diagnosing and resolving relay faults, ...

## Contact Us

For more information, pricing, or custom data center solutions, please contact us:

Website: <https://yoahorroenergia.es>

Email: [hello@yoahorroenergia.es](mailto:hello@yoahorroenergia.es)

Phone: +233 54 318 7269

Address: Plot 28, Spintex Road, Accra, Greater Accra, Ghana

This document is for informational purposes only. Specifications subject to change without notice.

