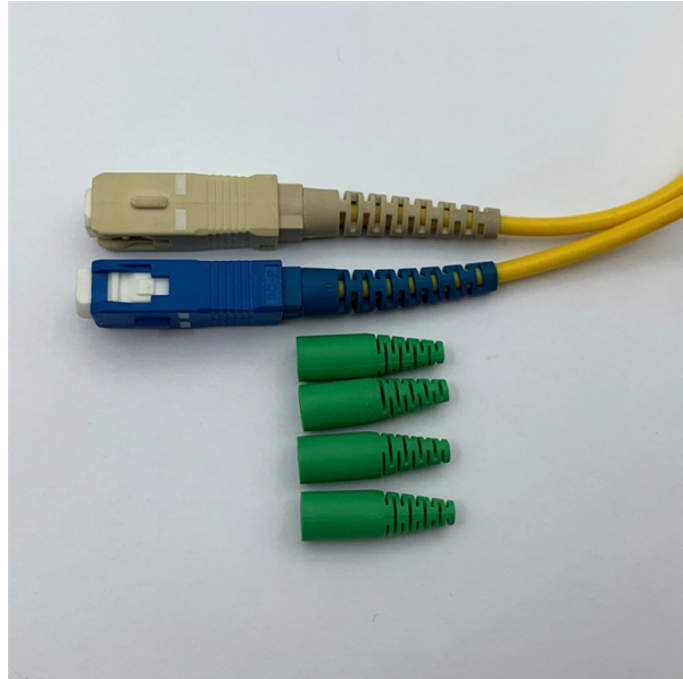


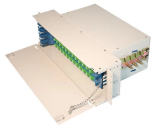
Fiber Optic Cold Connector Specifications and Models



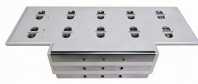
Fiber Optic Cold Connector Specifications and Models



□PEI material□ The main body of the connector is made of PEI materials, supports operation temperature between $-40^{\circ}\text{C}\sim 75^{\circ}\text{C}$, which is good fire retardance, wear-resistance and high ...



Designed as a one-piece connector, it accommodates bare fiber, $900\ \mu\text{m}$ buffered fiber, and 2.0 mm or 3.0 mm jacketed cables, offering versatility across a wide range of installation scenarios.



FASTConnect field installable connectors include LC, ST, SC and are compatible with $250\ \mu\text{m}$ and $900\ \mu\text{m}$ fiber optic cable, solutions designed for quick, tool-less termination. Ideal for enterprise, FTTx, ...



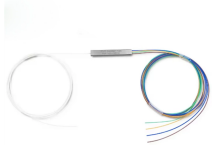
Widely used in FTTH, FTTx, LAN, and telecom networks, the cold fast splicer connector is ideal for emergency repairs, field termination, and temporary or permanent fiber links.



They're widely used in fiber transmission systems, distribution racks, CATV, FTTH installations, and campus networks. The package includes a detailed English installation diagram that walks you ...



JIS, IEC standard compliant and intermateability test certified. Comply with IEC 61754-13 and JIS C 5970(type F01). FC intermate test by NTT certified connector. Available with PC polishing, advanced ...



Each connector uses an A-grade tricyclic ceramic core and has low insertion loss (<math><0.3\text{dB}</math>) and high return loss (>50dB). The PEI body handles temps from



With proven field-installable connector technology, fiber terminations are fast, easy, and reliable. Corning high-precision mechanical splice technology enables fiber optic networks to be installed quickly and ...



Among these components, fiber connector types are essential to network performance, reliability, and scalability. This guide will walk you through the most common fiber connector types, ...



What Is a Fiber Fast Connector? A fiber fast connector, also known as a mechanical splice or cold connector, is a field-installable connector that terminates fiber optic cables without requiring a fusion ...

Contact Us

For more information, pricing, or custom data center solutions, please contact us:

Website: <https://yoahorroenergia.es>

Email: hello@yoahorroenergia.es

Phone: +233 54 318 7269

Address: Plot 28, Spintex Road, Accra, Greater Accra, Ghana

This document is for informational purposes only. Specifications subject to change without notice.

