

Fiber Optic Distribution Box Aggregation Monitoring



Fiber Optic Distribution Box Aggregation Monitoring



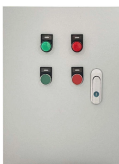
Maximizes fiber efficiency and space from 1 to 6 RU enclosure, from 72 up to 6,400 fibers Fiber management and aggregation solutions for all box sizes



To ensure consistent performance and longevity, it is essential to adhere to strict technical specifications. This article delves into the intricacies of ...



It begins with an introduction to fiber optic technology and the pivotal role of distribution boxes in managing fiber optic cables. The article categorizes the ...



The EX3024F is a fiber aggregation switch that has all 10 Gbps SFP+ fiber ports. It also has dual internal power supplies for additional robustness and redundancy.



It's a cost-effective aggregation, load balancing, and filtering solution, capable of monitoring 192 10G ports in only a 6U footprint, built from scalable and modular products for future ...



A clear guide to fiber box solutions in FTTH and ODN networks. Learn how fiber boxes support splitting, routing, and efficient deployment for telecom projects.



Corning's BOM tool is designed to help you quickly select the fiber optic products you need so that you can move on with the rest of your day.



Fiber aggregation is a common technique used in fiber optic networks to improve the infrastructure and increase network capacity. So, what exactly are fiber aggregation points? They are ...



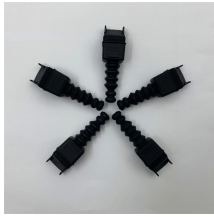
A clear guide to fiber box solutions in FTTH and ODN networks. Learn how fiber boxes support splitting, routing, and efficient deployment for ...



It begins with an introduction to fiber optic technology and the pivotal role of distribution boxes in managing fiber optic cables. The article categorizes the various types of fiber optic distribution ...



Large capacity weather-resistant cabinets designed to protect fiber optic splices in both buried and aerial distribution systems.



The Fiber Optic Distribution Box is a core component of fiber optic networks. It is essential for aggregation, branching, and cross-connections while maintaining a stable signal and operationally ...



In the second and final part of our series on Universal Aggregation, we take a look at Operational Expense (OPEX), and how to unlock buried (and aerial) fiber treasure in your access ...

Contact Us

For more information, pricing, or custom data center solutions, please contact us:

Website: <https://yoahorroenergia.es>

Email: hello@yoahorroenergia.es

Phone: +233 54 318 7269

Address: Plot 28, Spintex Road, Accra, Greater Accra, Ghana

This document is for informational purposes only. Specifications subject to change without notice.

