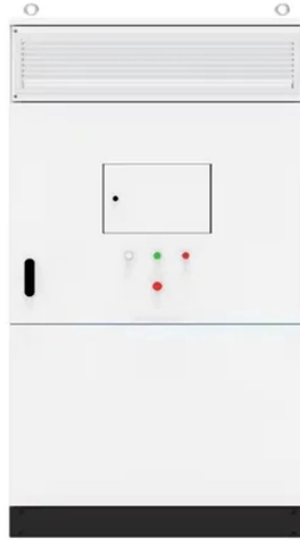


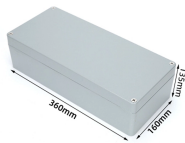
## Fiber optic box terminal box disassembly diagram



## Fiber optic box terminal box disassembly diagram



FTTH model of Fiber Optic Terminal Box is a newly developed by our company for application of FTTH. The box is light and compact, especially suitable for protective connection of fiber cables and pigtailed ...



AR-DB-CDO-10P-HC DESCRIPTION The equipment is used as an intermediate distribution point or a termination point for the feeder cable to connect with a drop cable in FTTH communication network ...



This user's manual is suitable for SUN-ODB-OD2BS series outdoor type wall mounted fiber optic distribution boxes, as the guide of proper installation. This distribution box can provide protection for fiber ...



What is a Fiber Termination Box? A fiber termination box is the standard instrument used in fiber optic networks to connect, secure, and protect optical fibers at the terminating point.



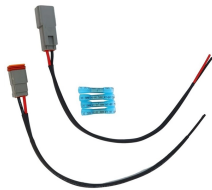
A Fiber Termination Box, also known as a Fiber Distribution Box, is a crucial component in fiber optic networks. It serves as a termination point for ...



Choose from two-dimensional and isometric product drawings in PDF, DXF, VSS formats, and Building Information Modeling (BIM) Objects.



With a capacity of up to 8 fibers, 8 SC simplex adapters, and easy installation instructions, this terminal box is ideal for efficient fiber optic connectivity.



When these optical fibers are installed or laid out, a Fiber Termination Box, or FTB, is used to distribute and protect the optical fiber links in FTTH networks.



A Fiber Termination Box, also known as a Fiber Distribution Box, is a crucial component in fiber optic networks. It serves as a termination point for optical fibers, providing a secure and ...



When that light reaches your home through the Verizon network, it is converted into electric signals in a box installed onto either the outside or inside of your home called the ONT.



The Optical Termination Box (OTB) consists of three sections: the Pigtail and Cable Inlet, the Splice Tray, and the Patch Cord compartment. The Splice Tray is located in one section of the box, while ...



This box is used as a termination point for the feeder cable to connect with drop cable in FTTx communication network system. It intergates fiber splicing, splitting, distribution, storage and cable ...



Have any questions? Talk with us directly using LiveChat.

## Contact Us

For more information, pricing, or custom data center solutions, please contact us:

Website: <https://yoahorroenergia.es>

Email: [hello@yoahorroenergia.es](mailto:hello@yoahorroenergia.es)

Phone: +233 54 318 7269

Address: Plot 28, Spintex Road, Accra, Greater Accra, Ghana

This document is for informational purposes only. Specifications subject to change without notice.

