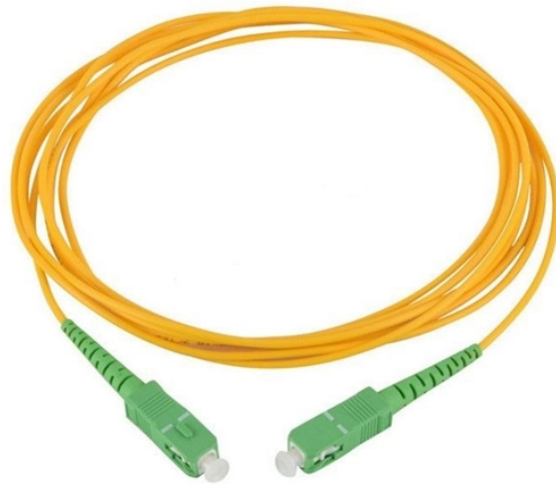


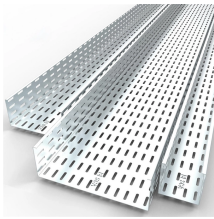
# **Fiber optic cable with line protection in substation**



## Fiber optic cable with line protection in substation



Fiber-optic cables in substations can be installed in the same manner as metallic conductor cables; however, this practice requires robust fiber-optic cables that can withstand normal construction ...



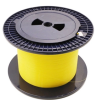
Like all optical fibers, they are immune to EMI/RFI and can offer lightning protection in an all-dielectric design. These fibers are also much lighter than traditional copper cables and enable more secure ...



High Precision AP750-L3 Fiber Optic Line Differential Protection Unit for Substation Power Grid Protection / Shiny-Control Technology Develop (beijing) Co., Ltd.



Securely transfer contacts through a high-speed IEEE C37.94 optical-fiber interface. Use the SEL-2595 Teleprotection Terminal to send and receive up to eight relay contacts directly over a pair of optical ...



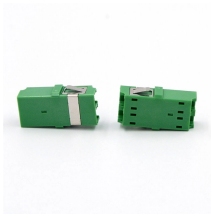
To provide resilient failover/redundancy, all of the INDURATM switches are installed in a fiber ring topology between substations and of the oices. This architecture provides a working and protected ...



This document is a guide for the design, installation, and protection of insulated wire and cable systems in substations with the objective of helping to minimize cable failures and their consequences.



An RTD has built-in fiber optic ports to connect to a motor-protection relay using a fiber optic cable. If insulation of the motor winding fails, damaging currents can flow through the RTD wiring.



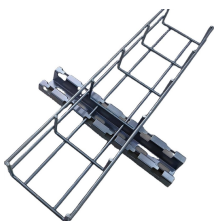
Fiber optic communications are inherently immune to electromagnetic interference and provide electrical isolation between the connected devices, which drastically reduces the risks to personnel and ...



Mechanical and environmental forces are continuously working to degrade all parts of a substation. Copper cables are being replaced by faster, lighter, more durable fiber optic cables. OCC has a ...



Conventional electrical pilot wires of a substation switchgear installation, to a great extent, are replaced with fiber-optic cables which transfers measured values, control commands, status and event data, etc.



Typically this is a direct fiber optic cable. In order to cope with any situation, a modern protection IED needs to be configurable to fit within its intended application area. Hitachi Energy's solution to this ...

## Contact Us

For more information, pricing, or custom data center solutions, please contact us:

Website: <https://yoahorroenergia.es>

Email: [hello@yoahorroenergia.es](mailto:hello@yoahorroenergia.es)

Phone: +233 54 318 7269

Address: Plot 28, Spintex Road, Accra, Greater Accra, Ghana

This document is for informational purposes only. Specifications subject to change without notice.

