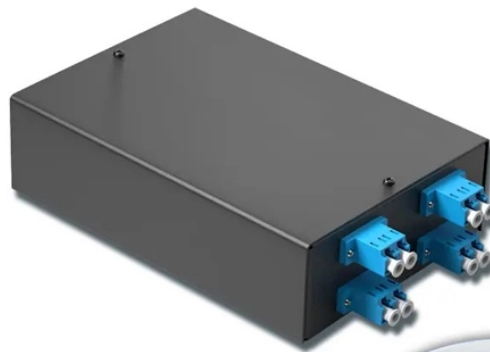


Fire Distribution Box Trip Unit

4-port 8-core LC wall-mounted fiber terminal box (empty frame)

Surface painted Scientific plate fiber Cold-rolled steel plate



Lifetime quality assurance

Free shipping

Customizable for telecommunications



Fire Distribution Box Trip Unit



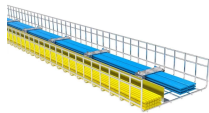
Discover why DC circuit breakers come equipped with MX+OF shunt trip units. Learn their role in remote control, fire protection systems, and electrical safety in modern low-voltage ...



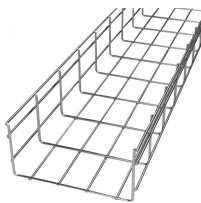
Product Description JFP63B076 Fire Pump Circuit Breaker ACCU-TRIP Trip Unit 15-76A Adjustable 100A Rated Thermal magnetic 3 Pole unit Rated 240/480/600V Test Plug Port 50 Kiloampere At 240 ...



PowerPacT H-, J-, and L-frame circuit breakers offer a range of thermal-magnetic and MicroLogic electronic trip units in interchangeable cases. Thermal-magnetic trip units are designed to open ...



This combination type includes all of the protection of a standard breaker, plus it directly detects persistent low current arcing faults down to 5A to efficiently ...



The PXR trip unit provides an override trip function that will trip the circuit breaker at the withstand rating of the circuit breaker frame. This function is factory set and reacts to the peak current level.



The protective function of the circuit breaker in the power distribution system is determined by the selection of the appropriate release (see Figure 1). Releases can be divided into: ...



This combination type includes all of the protection of a standard breaker, plus it directly detects persistent low current arcing faults down to 5A to efficiently protect against fire hazards in the cords ...



Master MCCB trip unit settings (I_r , I_{sd} , I_i). Learn how to calculate protection parameters, ensure selectivity coordination, and prevent nuisance tripping with this VIOX technical guide.



The Gallagher Fuse & Fire Relay Board provides fused power distribution and optional fire panel door control in case of fire emergency. The board fits a standard Gallagher 1/4 footprint, and can be ...



The Jack Fuse PP8FR is an all-in-one solution, providing reliable fire trip capability as well as protecting cables and equipment from over-current damage, via on-board fuses for each ...

Overload Protection Neutral Conductor Protection Short-Circuit Protection, Instantaneous Short-Circuit Protection, Delayed Earth-fault Protection Fault-Current Protection Designation: L (LT: long-time delay), previously a-release. Depending on the type of release, inverse-time-delay overload releases are also available with optional characteristic curves. The nominal pickup point where a circuit breaker trip unit detects an overload is at 1.075 times the selected ampere rating. After the circuit breaker has picked u... See more on electrical-engineering-portal

Missing: Fire Distribution Box Must include: Fire Distribution Box

```

.b_imgcap_alttitle p
strong,.b_imgcap_alttitle .b_factrow strong{color:#767676}#b_results .b_imgcap_altit
le{line-height:22px}.b_imgcap_alttitle{display:flex;flex-direction:row-
reverse;gap:var(--mai-smtc-padding-card-nested-default)}.b_imgcap_alttitle
.b_imgcap_img{flex-shrink:0;display:flex;flex-direction:column}.b_imgcap_alttitle
.b_imgcap_main{min-width:0;flex:1}.b_imgcap_alttitle
.b_imgcap_img>div,.b_imgcap_alttitle .b_imgcap_img a{display:flex}.b_imgcap_alttitle
.b_imgcap_img img{border-radius:var(--mai-smtc-corner-card-default)}.b_hList
img{display:block}.b_imagePair ner img{display:block;border-radius:6px}.b_algo
.vtv2 img{border-radius:0}.b_hList .cico{margin-bottom:10px}.b_title .b_imagePair>
ner,.b_vList>li>.b_imagePair> ner,.b_hList .b_imagePair>
ner,.b_vPanel>div>.b_imagePair> ner,.b_gridList .b_imagePair> ner,.b_caption
.b_imagePair> ner,.b_imagePair> ner>.b_footnote,.b_poleContent .b_imagePair>
ner{padding-bottom:0}.b_imagePair> ner{padding-
bottom:10px;float:left}.b_imagePair.reverse> ner{float:right}.b_imagePair
.b_imagePair:last-child:after{clear:none}.b_algo .b_title .b_imagePair{display:block}.
b_imagePair.b_cTxtWithImg>*{vertical-align:middle;display:inline-
block}.b_imagePair.b_cTxtWithImg> ner{float:none;padding-
right:10px}.b_imagePair.square_s> ner{width:50px}.b_imagePair.square_s{padding-
left:60px}.b_imagePair.square_s> ner{margin:2px 0 0 -60px}.b_imagePair.square_s.r
everse{padding-left:0;padding-right:60px}.b_imagePair.square_s.reverse>
ner{margin:2px -60px 0 0}.b_ci_image_overlay:hover{cursor:pointer}
sightsOverlay,#OverlayIFrame.b_mcOverlay sightsOverlay{position:fixed;top:5%;left:
5%;bottom:5%;right:5%;width:90%;height:90%;border:0;border-radius:15px;margin:0
;padding:0;overflow:hidden;z-index:9;display:none}#OverlayMask,#OverlayMask.b_
mcOverlay{z-index:8;background-color:#000;opacity:.6;position:fixed;top:0;left:0;wid
th:100%;height:100%}.b_factrow>li.b_sritem,.b_factrow .ssp_expert{font-
weight:bold}.b_factrow.b_twofr .b_sritem>.b_sritemp{display:inline;font-
weight:normal}.b_factrow.b_twofr .b_sritem{font-weight:bold}.b_factrow.b_twofr
.csrc{margin-left:5px}.b_factrow.b_twofr{padding-top:4px}.b_factrow.b_twofr ul:first-
child{max-width:calc(50% - 20px)}.b_factrow.b_twofr ul:first-child+ul{max-
width:50%}.b_factrow.b_twofr ul li div{white-space:nowrap;text-
overflow:ellipsis;overflow:hidden}.b_imagePair.wide_wideAlgo .b_factrow.b_twofr
.b_vlist2col{display:flow-root}Breaker Outlet

```

Contact Us

For more information, pricing, or custom data center solutions, please contact us:

Website: <https://yoahorroenergia.es>

Email: hello@yoahorroenergia.es

Phone: +233 54 318 7269

Address: Plot 28, Spintex Road, Accra, Greater Accra, Ghana

This document is for informational purposes only. Specifications subject to change without notice.

