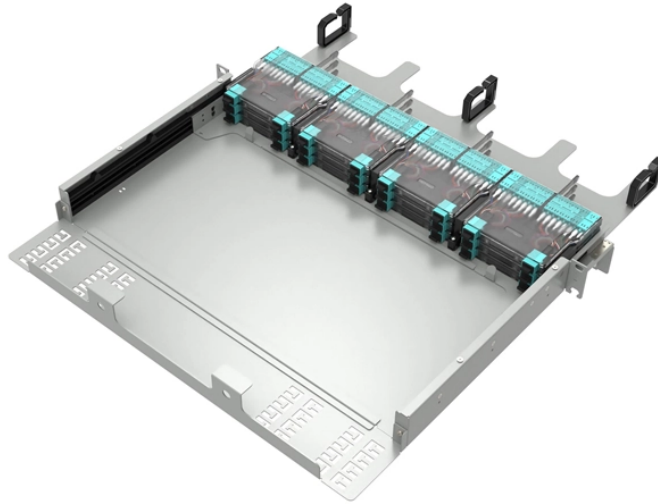


Fixing Aluminum Alloy Trapezoidal Cable Tray



Fixing Aluminum Alloy Trapezoidal Cable Tray



Discover the best fixing and mounting options for cable trays and wire mesh basket trays. CMW shares tips for efficient cable management.



Why did your aluminum alloy cable trays soften carrying warm fertilizer water? Learn the root cause & 3 expert solutions, including the recommended fix.



We have more than a decade's worth of experience making and designing quality cable tray and cable management systems. Our knowledgeable production team works closely with each customer to ...



The aluminum alloy fixing bracket comes in various sizes to accommodate ...



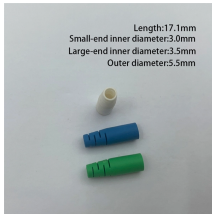
Cable tray length is selected based on the load to be supported, the distance between the supports (also referred to as the span), and handling and installation constraints.



General Installation Guidelines: latest NEMA standards and local building codes. Trough tray field support and frequency depends on the weight and construction (splice locations, elbow fittings, etc.) ...



The document outlines steps for laying cables, including installing supports, fixing the tray, laying cables with proper spacing, and tying them with cable ties.



In the video, a construction worker is using a common fixing tool in the construction industry to firmly install an aluminum alloy clip onto the wall ridge.



This article explores the design, benefits, installation practices, and real-world applications of aluminum alloy cable trays, providing actionable insights for your next project.



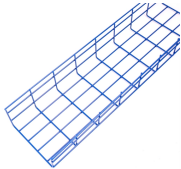
Buy 150mm cable tray trapeze bracket with 300mm drop. Fully assembled pre-galvanised kit includes all strut, bolts, and fixings for fast install.



Since the most economical cable tray system utilizes heat treated aluminum alloys, or high strength steels with long spans, any limitation on deflection which will not ...



The aluminum alloy fixing bracket comes in various sizes to accommodate different types of cables. The smallest size is suitable for 4mm standard Category 5 cables, while the largest size can hold up to ...



The Cable Tray Institute is making available the current edition of this practical guide for the proper installation of aluminum or steel cable tray systems. These guidelines will be useful to engineers, ...

Contact Us

For more information, pricing, or custom data center solutions, please contact us:

Website: <https://yoahorroenergia.es>

Email: hello@yoahorroenergia.es

Phone: +233 54 318 7269

Address: Plot 28, Spintex Road, Accra, Greater Accra, Ghana

This document is for informational purposes only. Specifications subject to change without notice.

