

Formula diagram for making left and right bends in cable trays



Formula diagram for making left and right bends in cable trays



A right-hand railroad switch with point indicator pointing to right Animated diagram of a right-hand railroad switch. The green line represents direction of travel only, the ...



Creating bends in wire mesh cable trays is simple, fast, and cost-effective when done correctly. With proper cutting and bending techniques, you can achieve professional cable routing without additional ...



you,the,i,to,a,and,it,of,that,in,is,me,what,this,for,m y,on,your,we,have,do,no,don't,are,be,i'm,not,was, he,it's,know,with,all,but,here,get,so,just,go,like,up ,right ...



Cable Tray Bend and Offset Formulas The document discusses Metstrut cable tray systems, including their configuration, materials, dimensions, and compliance with industry standards.



This model was trained by Shinji Watanabe using nsc recipe in espnet. Python APISee https://github.com/espnet/espnet_model_zoo Evaluate in the recipegit clone https://github.com/espnet/espnet_model_zoo



Uponor offers durable PEX piping, fittings, and other products for plumbing, radiant heating and cooling. Learn why PEX is preferred by ...



Finally, by using the CreateOffset function with a distance equal to half the cable tray width, we can achieve our desired outcome. Below is sample code that summarizes the process; you need to take ...



We can supply standard cable trays, bends, reducers, risers, elbows, and fully customized compound offset fittings. If your site has tight clearances or complex routing requirements, our manufacturing ...



theSkimm makes it easier to live smarter. Join the millions who wake up with us every morning.



Guide for making bends, tees, crosses, risers and reducers from straight sections of wire basket cable trays live at the project.



By applying the following formula you can quickly find the size of cut out section that you need to cut out of the side of the cable tray, or gutter-type section to make that angle.



NL8530012 12" Wide 1 90° Short Radius Bends
200 mm (8") Wide Cable Trays Required
Accessories



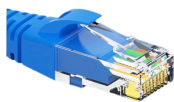
Making bent elbows for cable trays according to the formulas provided in the diagram is for reference only. The data is directly related to the width or height of the cable tray, and calculations can be ...



Contribute to [annontopicmodel/unsupervised_topic_modeling](#) development by creating an account on GitHub.



Your family needs to be aligned to the centre front/back and centre left/right planes so that the middle of the elements which host the connectors are located on those planes. The origin or ...



É Muttonhead × B0r 0-II 2 by Sy Z, Ventolyn → Ehovaler →, released 04 January 2024 1. straighten up there, you shambling muttonheads! 2. b0r02 3. tthéd& #39;n& #39;œumen0& #39;nr& #39;k ...



Find the latest Design news from Fast company. See related business and technology articles, photos, slideshows and videos.



In addition to the splicer and cleaver, the tech doing the splicing will need a set of cable preparation and fiber stripping tools. Since much fusion splicing is done in ...



How to bend 90 degree ang 45 degree of cable tray using 3 basic formula • HOW TO BEND 90 DEGREE AND 45 DEGREE OF CAB... How to bend a cable tray with same distance • HOW TO ...



Welcome to BIG W's Marketplace! Explore millions of products from trusted sellers covering everything from Furniture and Tech, all the ...

Contact Us

For more information, pricing, or custom data center solutions, please contact us:

Website: <https://yoahorroenergia.es>

Email: hello@yoahorroenergia.es

Phone: +233 54 318 7269

Address: Plot 28, Spintex Road, Accra, Greater Accra, Ghana

This document is for informational purposes only. Specifications subject to change without notice.

