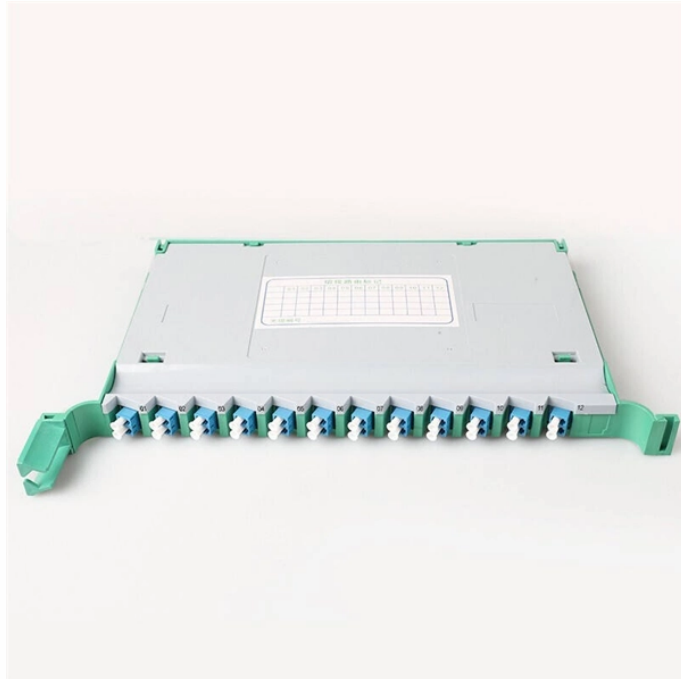


## Function of cable tray support for limiting position



## Function of cable tray support for limiting position



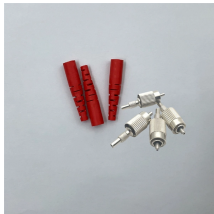
With regard to the cable support lengths, the manufacturer must provide information on the limit values for the final support spacing, position and type of the connection within the span width as well as the ...



Cable tray must be capable of supporting not just the weight of the cable, but also the weight of any equipment or materials attached to the cable tray. Additionally, dynamic environmental elements ...



Some applications may require the cable tray to support the weight of a single, dead object in addition to the cable loads. Specifications typically require this to be applied at the midpoint of the span between ...



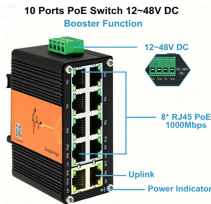
Cable tray systems are structural components used to support insulated conductors and control, instrumentation, and communication cables. They are typically installed overhead, along ...



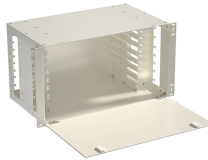
The function is to provide a continuous, supported pathway that prevents cables from lying loose and vulnerable to physical damage. The system includes straight sections, fittings, and support hardware.



To maintain support of cables at changes of elevation or direction of a tray, a large number of specialized cable tray fittings are made compatible with each style and ...



Wall support brackets (Figures 12) are an effective way of fixing any width of cable ladder or cable tray, running either vertically or horizontally, to a vertical support.



Cable trays are a part of a planned cable management system to support, route, protect and provide a pathway for cable systems. Cable trays support cables across open spans in the same way that ...



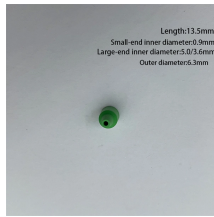
The primary function of cable trays is to provide structural support for cables and wiring. This prevents cables from lying on the floor or other surfaces where they could be damaged.



Cable tray is considered to be a system. It must provide continuous support for cables, and the electrical continuity of the cable tray system must be maintained.



**POSITIONING OF THE SUPPORTS** Changes of level and direction: Put supports in place before there is any deflection of the cable tray route. It is recommended to place supports at the start and end of ...



This guide covers the critical steps, from selecting the right electrical cable tray and performing accurate cable fill calculations to managing a safe cable pull through and ensuring all bonding and grounding ...

## Contact Us

For more information, pricing, or custom data center solutions, please contact us:

Website: <https://yoahorroenergia.es>

Email: [hello@yoahorroenergia.es](mailto:hello@yoahorroenergia.es)

Phone: +233 54 318 7269

Address: Plot 28, Spintex Road, Accra, Greater Accra, Ghana

This document is for informational purposes only. Specifications subject to change without notice.

