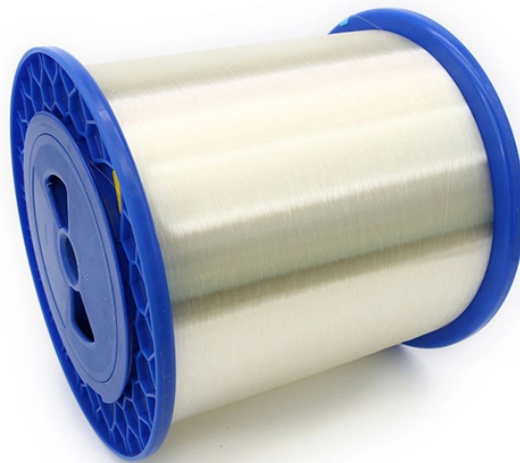


# Gabon Bridge Structure Irregular Bend



## Overview

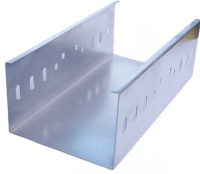
Evaluations of different irregular conditions in bridges subjected to seismic load, considering systems with length relations of extreme girder to central girder of 1:0.75 and 1:2, and structures with curvatures of 30°, 60°, 90°, 120°. Review of planning and construction services rendered in eleven projects (mostly road construction) in terms of quality and volume. By modernizing its street network, Gabon wants to promote the diversification of the country's economy, and further develop tourism and agriculture. This is also. This category has the following 2 subcategories, out of 2 total. There are times when engineers would have to design and evaluate bridge structures that fall outside of the AASHTO design guideline. Therefore, when do we define a structure as irregular?

How is evaluating an irregular bridge different from evaluating a regular bridge?

How to minimize errors during. In 2007, Tuojiang Bridge catastrophically collapsed during construction, resulting in 64 deaths and 22 injuries as well as

a direct economic loss of about 39. Nevertheless, at present there is no developed road link to the inland. That's why the city can be reached or supplied only by air or sea so far.

## Gabon Bridge Structure Irregular Bend



The following 9 files are in this category, out of 9 total.



In addition, engineers need to do many calculations of temporary structures, such as brackets, steel trestles, temporary piers, etc. Inadequate consideration of the boundary conditions, loads, and ...



Franki Foundations is working on behalf of BESIX Gabon as part of the duplication of the bridge, which is currently limited to a single lane. This ambitious project aims to improve traffic flow and enhance ...



LA CONSTRUCTION DES PONTS DE KANGO, UNE BELLE REALISATION DE L'ENTREPRISE FRANCAISE AU GABON THE AUTHORS DESCRIBE THE PROJECT AND CONSTRUCTION OF ...



The construction of the bridge over the mouth of the biggest river of Gabon, the Ogooué, in the frame of the new construction of the road, is a first step to connect Port Gentil to the hinterland.



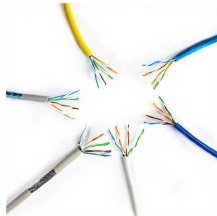
The image below shows the plan view of a highly skewed bridge structure with monolithic construction consists of concrete boxes and very strong diaphragm. Due to the high skew angle, ...



Elastic and nonlinear analyses were accomplished and the normalized differences between regular and irregular models were evaluated. This parameter was organized by quartiles to define trends of ...



The project consists of the construction of a new bridge near Booué in central Gabon in the province of Ogooué-Ivindo. After construction of the bridge finally there will be a connection between the two ...



Here two bridge spans damaged by a barge were replaced by a new, 80 m long steel arch bridge. To expand capacities, the construction of a new 350 m long bridge running in parallel to the existing ...



In this framework, the presented research is devoted to the dynamic comfort assessment of a pioneering cable-stayed GFRP pedestrian bridge, Aberfeldy, which was assembled in 1992 in the eponymous...

## Contact Us

For more information, pricing, or custom data center solutions, please contact us:

Website: <https://yoahorroenergia.es>

Email: [hello@yoahorroenergia.es](mailto:hello@yoahorroenergia.es)

Phone: +233 54 318 7269

Address: Plot 28, Spintex Road, Accra, Greater Accra, Ghana

This document is for informational purposes only. Specifications subject to change without notice.

