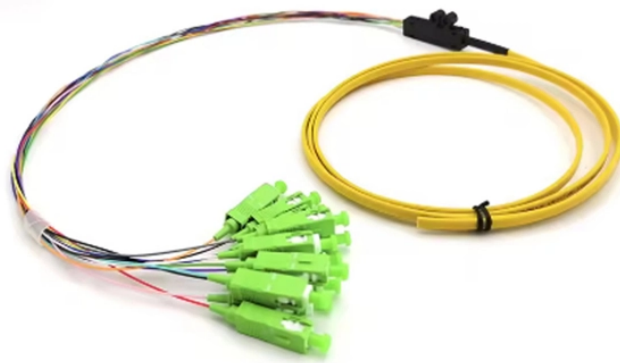
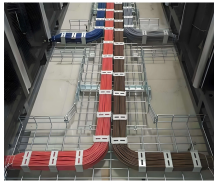


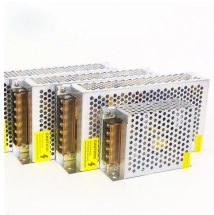
# **German butterfly drop cable G 652**



## German butterfly drop cable G 652



Product Description Cable Details 1-Core G652D FTTH Indoor Butterfly Optical Cable GJXH with Phosphided Steel Wire Reinforcement



Durable construction with 2 steel wires for extra strength and protection against environmental factors. The flexible 2\*3mm design makes it ideal for indoor installations and is easy to route and manage. ...



GJXFH fiber optic drop cable is a versatile indoor fiber optical cable that can be used in various applications, including FTTH and FTTB networks.



Fiber Indoor/Outdoor Drop Cable, TeraSPEED<sup>®</sup>, Low Smoke Zero Halogen Single Jacket All-Dielectric Arid-Core, 6 fiber, Gel-filled, Singlemode G.652.D and G.657.A1, Feet jacket marking, Black jacket ...



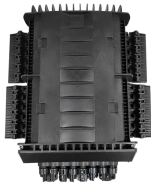
The cable is designed for short-span, self-supporting aerial installations as well as to be installed on facades, poles, and ducts in FTTH deployments. The outer jacket is UV-stablized PE and FRNC ...



FTTH outdoor drop cable G657A1/G657B/G652D with FRP strength member. 1-4 core self-supporting design, LSZH jacket. Bulk pricing for ISP last-mile deployment.



Optical fiber jumper is a fiber optic connector at both ends of an optical cable to realize the active connection between optical network equipment and equipment, equipment and jumper.



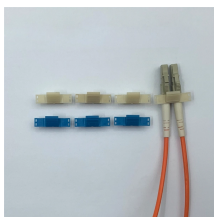
Prysmian Group's singlemode optical fibre for FTTH deployment combines excellent low macro-bending sensitivity (G.657.A2 and G.657.B2 compliant) and all the ...



Drop Cable G.652.D and G.657.A1 Drop cable is designed for last-one-mile in the FTTx network, enhancing the accessibility to the fiber and maximizes the installation workability.



Key Point: G.657.A1 is fully compatible with G.652.D fiber and the PON infrastructure, while G.657.A2 offers superior bend performance for complex indoor routing.



The cable features an armored construction where the Butterfly drop cable is positioned in the center, two parallel additional strength members are placed at the two sides, and it is wrapped with a layer of ...

## Contact Us

For more information, pricing, or custom data center solutions, please contact us:

Website: <https://yoahorroenergia.es>

Email: [hello@yoahorroenergia.es](mailto:hello@yoahorroenergia.es)

Phone: +233 54 318 7269

Address: Plot 28, Spintex Road, Accra, Greater Accra, Ghana

This document is for informational purposes only. Specifications subject to change without notice.

